

Features

- 1600UT System™2 is a high thermal performance, structural silicone glazed curtain wall system
- Innovative design delivers high thermal performance while leveraging 1600 Wall System architecture
- Multiple thermal performance levels resulting from a combination of:
 - 1" (25.4) Double or 1-3/4" (44.5) Triple glazed insulating glass units
 - Aluminum or Fiberglass pressure plates
- Thermal barrier design ensures high thermal performance without being susceptible to thermal fatigue
- Offers integrated entrance framing systems
- Corners and splays available
- Comprehensively tested to latest high performance air, water, structural and thermal standards
- Glass chairs support insulating glass units enabling larger expanses of glass
- Pressure equalized system tested with vapor barrier
- Two color option
- Permanodic™ anodized finishes in seven choices
- Painted finishes in standard and custom choices

Optional Features

- Steel reinforcing
- Rain screen and backpans
- Deep profile covers and bull nose covers
- Deep and heavy-weight mullions
- Integrates with standard Kawneer windows and GLASSvent™ Windows for curtain wall
- Profit\$Maker™ plus die sets available

Product Applications

- Ideal for low to mid-rise applications where high thermal performance is desired
- High span applications

For specific product applications,
Consult your Kawneer representative.

Laws and building and safety codes governing the design and use of glazed entrance, window, and curtain wall products vary widely. Kawneer does not control the selection of product configurations, operating hardware, or glazing materials, and assumes no responsibility therefor.

Kawneer reserves the right to change configuration without prior notice when deemed necessary for product improvement.
© Kawneer Company, Inc., 2013

Architects - Most extrusion and window types illustrated in this catalog are standard products for Kawneer. These concepts have been expanded and modified to afford you design freedom. Some miscellaneous details are non-standard and are intended to demonstrate how the system can be modified to expand design flexibility. Please contact your Kawneer representative for further assistance.

PICTORIAL VIEW 4

1" INFILL DETAILS..... 5

ENTRANCE DETAILS 6-8

CORNERS 9

SPLAYED MULLION OPTIONS 10

WINDOWS 11

1-3/4" INFILL DETAILS 12

ENTRANCE DETAILS 13-15

CORNERS 16

WINDOWS 17

BACKPAN DETAILS 18,19

MISCELLANEOUS FRAMING..... 20

ANCHORING 21,22

WIND LOAD CHARTS 23-27

DEADLOAD CHARTS 28-32

THERMAL CHARTS 33-46

LAWS AND BUILDING AND SAFETY CODES GOVERNING THE DESIGN AND USE OF GLAZED ENTRANCE, WINDOW, AND CURTAIN WALL PRODUCTS VARY WIDELY. KAWNEER DOES NOT CONTROL THE SELECTION OF PRODUCT CONFIGURATIONS, OPERATING HARDWARE, OR GLAZING MATERIALS, AND ASSUMES NO RESPONSIBILITY THEREFOR.

Metric (SI) conversion figures are included throughout these details for reference. Numbers in parentheses () are millimeters unless otherwise noted.

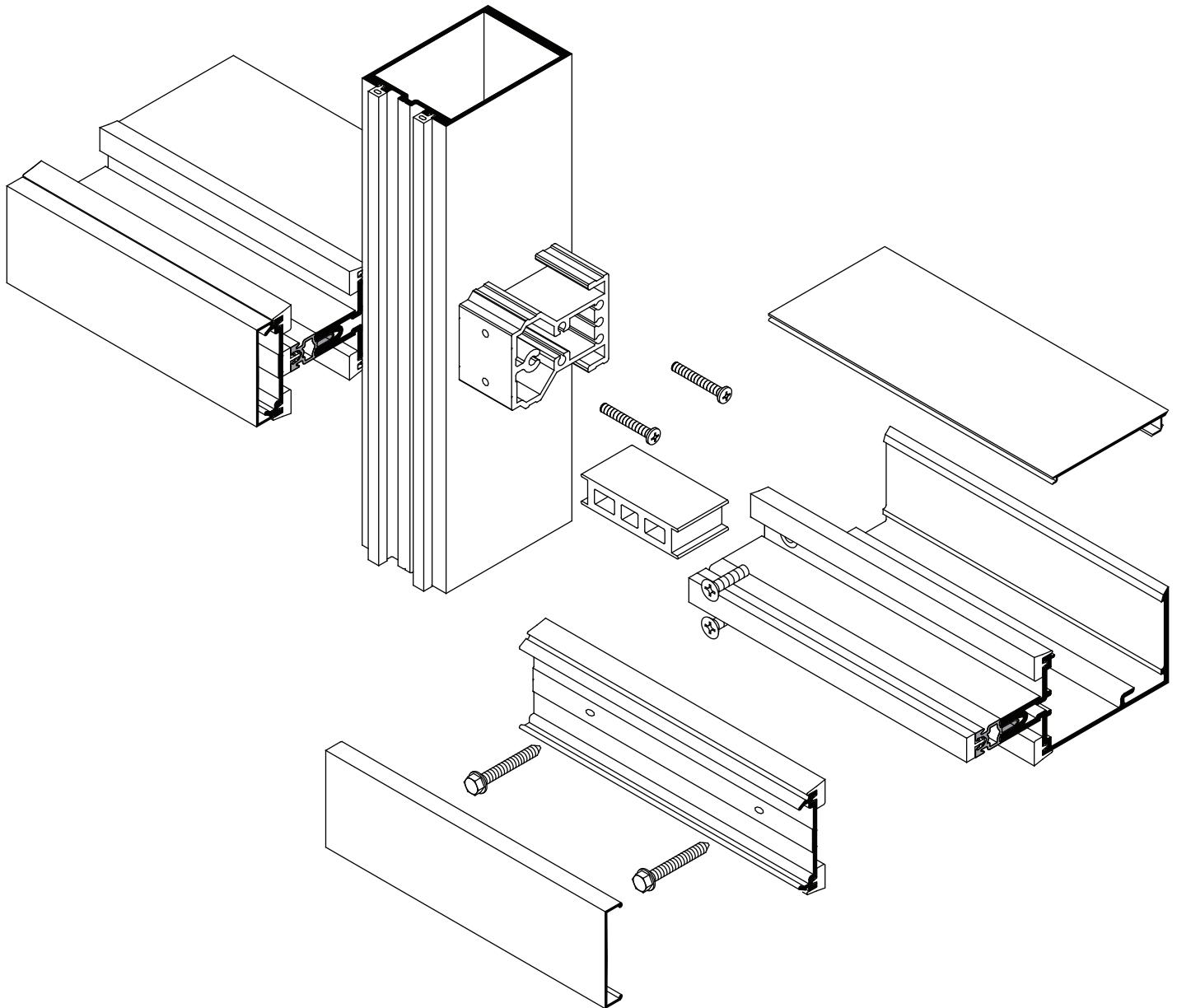
The following metric (SI) units are found in these details:

- m – meter
- cm – centimeter
- mm – millimeter
- s – second
- Pa – pascal
- MPa – megapascal

Kawneer reserves the right to change configurations without prior notice when deemed necessary for product improvement.

Laws and building and safety codes governing the design and use of glazed entrance, window, and curtain wall products vary widely. Kawneer does not control the selection of product configurations, operating hardware, or glazing materials, and assumes no responsibility therefor.

Kawneer reserves the right to change configuration without prior notice when deemed necessary for product improvement.
© Kawneer Company, Inc., 2013

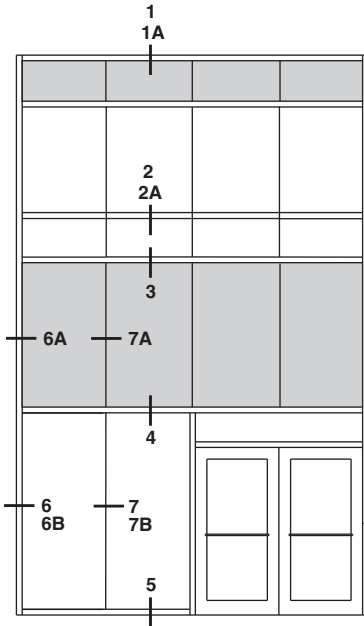


Laws and building and safety codes governing the design and use of glazed entrance, window, and curtain wall products vary widely. Kawneer does not control the selection of product configurations, operating hardware, or glazing materials, and assumes no responsibility therefor.

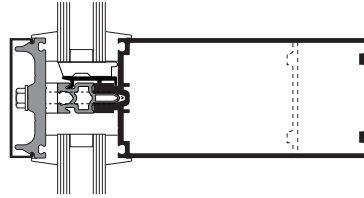
Kawneer reserves the right to change configuration without prior notice when deemed necessary for product improvement.

© Kawneer Company, Inc., 2013

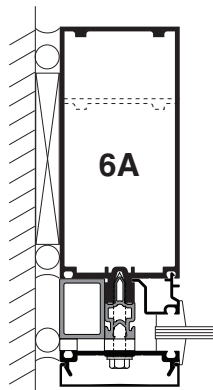
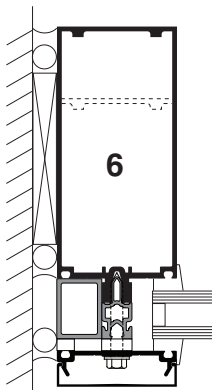
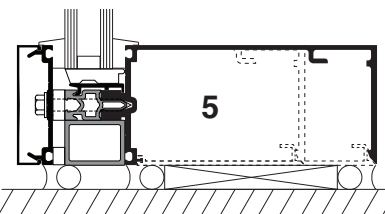
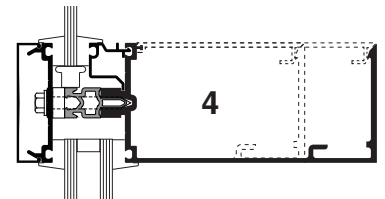
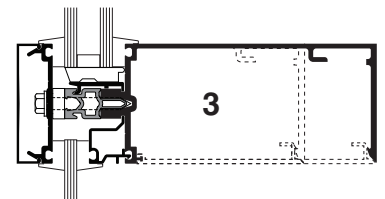
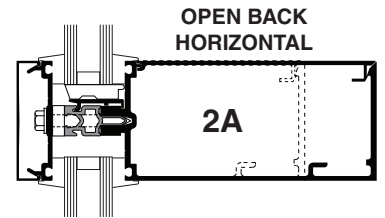
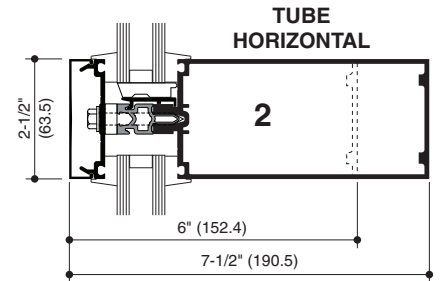
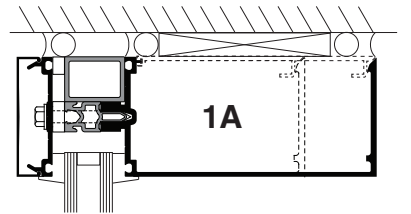
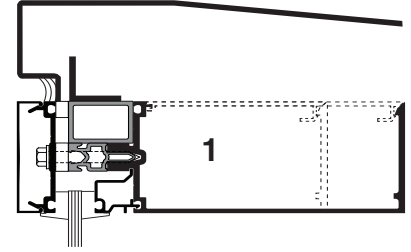
SCALE 3" = 1'-0"



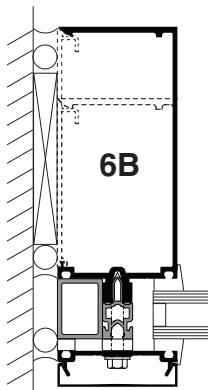
ELEVATION IS NUMBER KEYED TO DETAILS



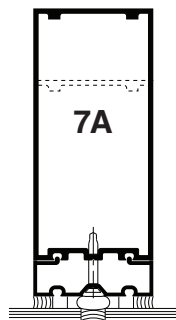
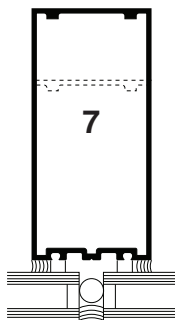
**OPTIONAL
FIBERGLASS
PRESSURE PLATE**



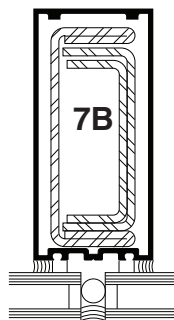
**1/4" INFILL
ADAPTER**



OPEN BACK JAMB



**1/4" INFILL
ADAPTER**



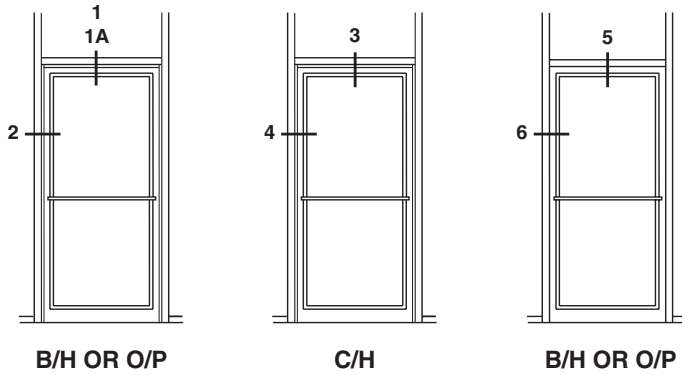
**STEEL
REINFORCING
AS REQUIRED**

Laws and building and safety codes governing the design and use of glazed entrance, window, and curtain wall products vary widely. Kawneer does not control the selection of product configurations, operating hardware, or glazing materials, and assumes no responsibility therefor.

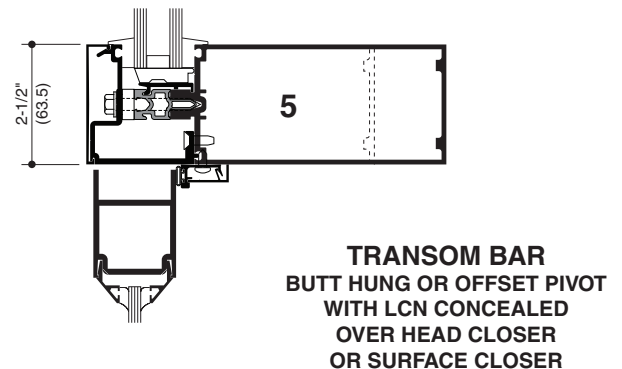
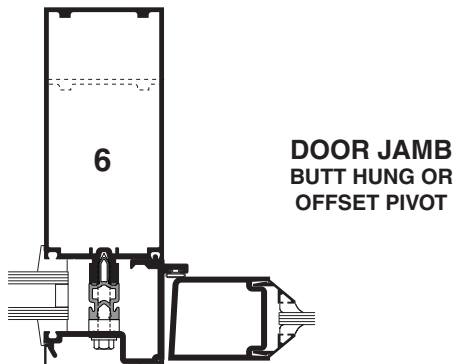
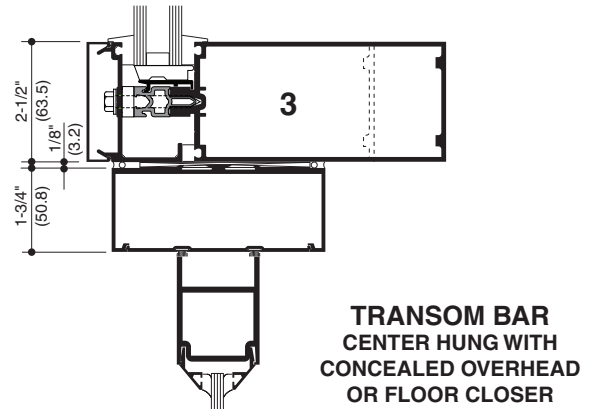
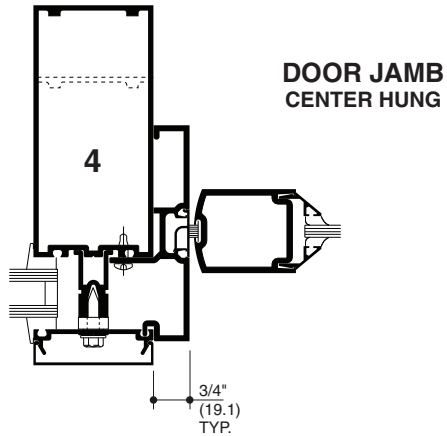
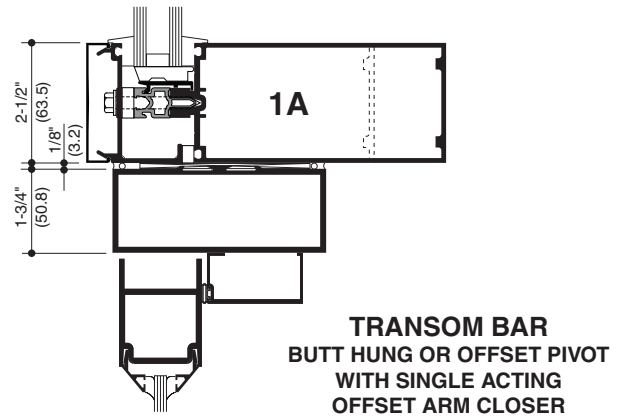
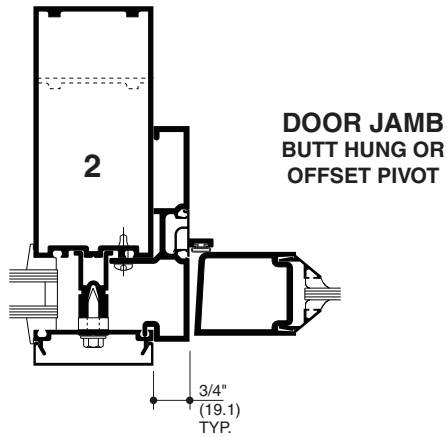
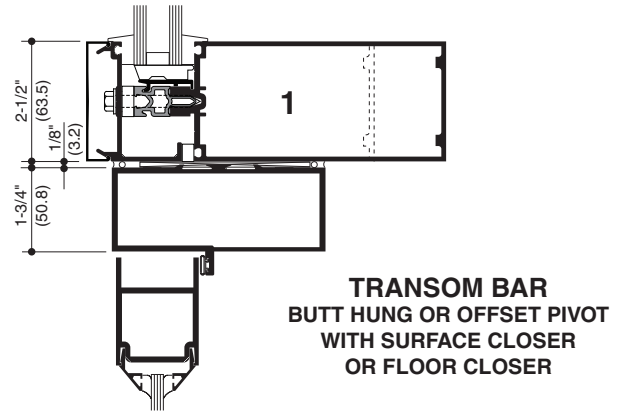
Kawneer reserves the right to change configuration without prior notice when deemed necessary for product improvement.

© Kawneer Company, Inc., 2013

SCALE 3" = 1'-0"



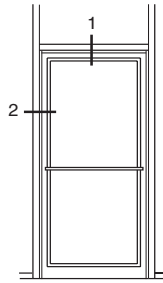
ELEVATION IS NUMBER KEYED TO DETAILS



Laws and building and safety codes governing the design and use of glazed entrance, window, and curtain wall products vary widely. Kawneer does not control the selection of product configurations, operating hardware, or glazing materials, and assumes no responsibility therefor.

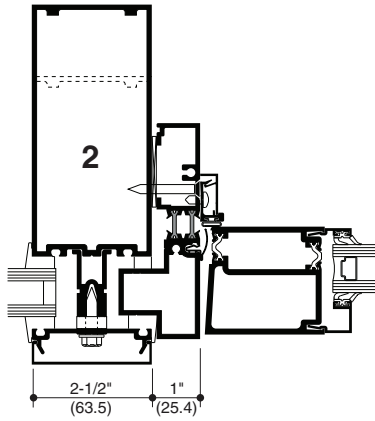
Kawneer reserves the right to change configuration without prior notice when deemed necessary for product improvement.
© Kawneer Company, Inc., 2013

SCALE 3" = 1'-0"

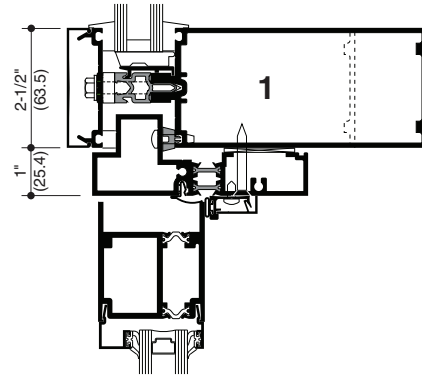


B/H OR O/P

ELEVATION IS NUMBER KEYED TO DETAILS



**DOOR JAMB
BUTT HUNG OR
OFFSET PIVOT**

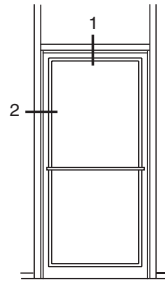


**TRANSOM BAR
BUTT HUNG OR
OFFSET PIVOT WITH
SURFACE CLOSER
OR FLOOR CLOSER**

Laws and building and safety codes governing the design and use of glazed entrance, window, and curtain wall products vary widely. Kawneer does not control the selection of product configurations, operating hardware, or glazing materials, and assumes no responsibility therefor.

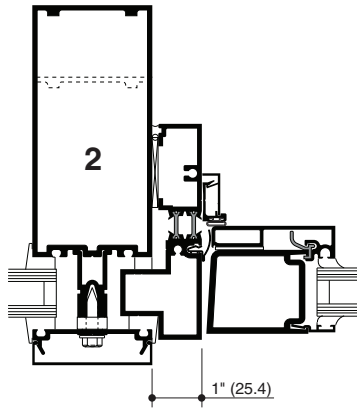
Kawneer reserves the right to change configuration without prior notice when deemed necessary for product improvement.
© Kawneer Company, Inc., 2013

SCALE 3" = 1'-0"

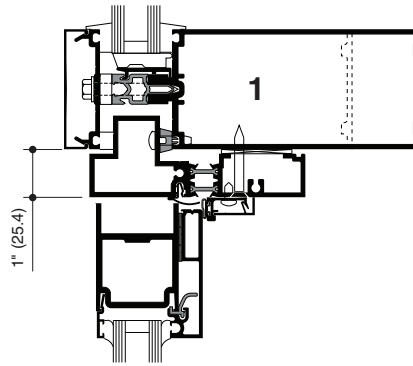


B/H OR O/P

ELEVATION IS NUMBER KEYED TO DETAILS



DOOR JAMB
BUTT HUNG OR
OFFSET PIVOT



TRANSOM BAR
BUTT HUNG OR
OFFSET PIVOT WITH
SURFACE CLOSER
OR FLOOR CLOSER

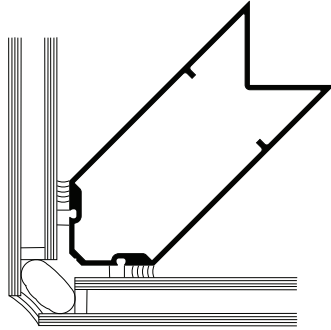
Laws and building and safety codes governing the design and use of glazed entrance, window, and curtain wall products vary widely. Kawneer does not control the selection of product configurations, operating hardware, or glazing materials, and assumes no responsibility therefor.

Kawneer reserves the right to change configuration without prior notice when deemed necessary for product improvement.
© Kawneer Company, Inc., 2013

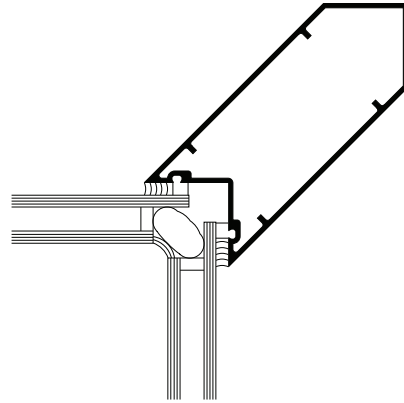
SCALE 3" = 1'-0"

Laws and building and safety codes governing the design and use of glazed entrance, window, and curtain wall products vary widely. Kawneer does not control the selection of product configurations, operating hardware, or glazing materials, and assumes no responsibility therefor.

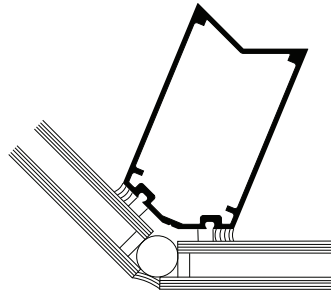
Kawneer reserves the right to change configuration without prior notice when deemed necessary for product improvement.
© Kawneer Company, Inc., 2013



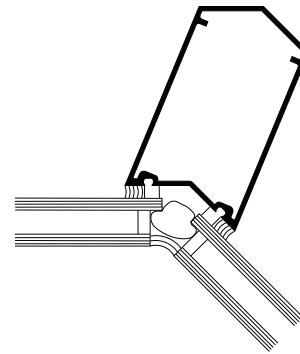
90° OUTSIDE CORNER



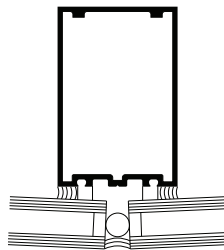
90° INSIDE CORNER



135° OUTSIDE CORNER

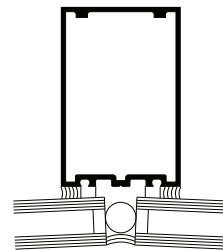


135° INSIDE CORNER



0° TO 5°

OUTSIDE SPLAYED MULLIONS

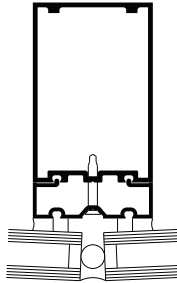


0° TO 5°

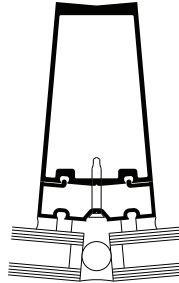
INSIDE SPLAYED MULLIONS

OTHER SPLAY OPTIONS AVAILABLE

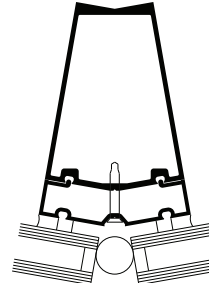
SCALE 3" = 1'-0"



0° TO 5°

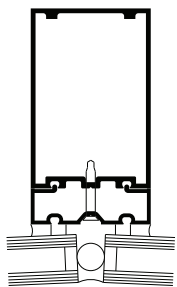


5° TO 15°

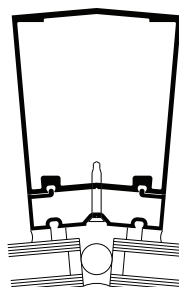


15° TO 25°

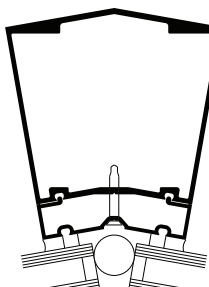
OUTSIDE SPLAYED MULLIONS



0° TO 5°



5° TO 15°



15° TO 25°

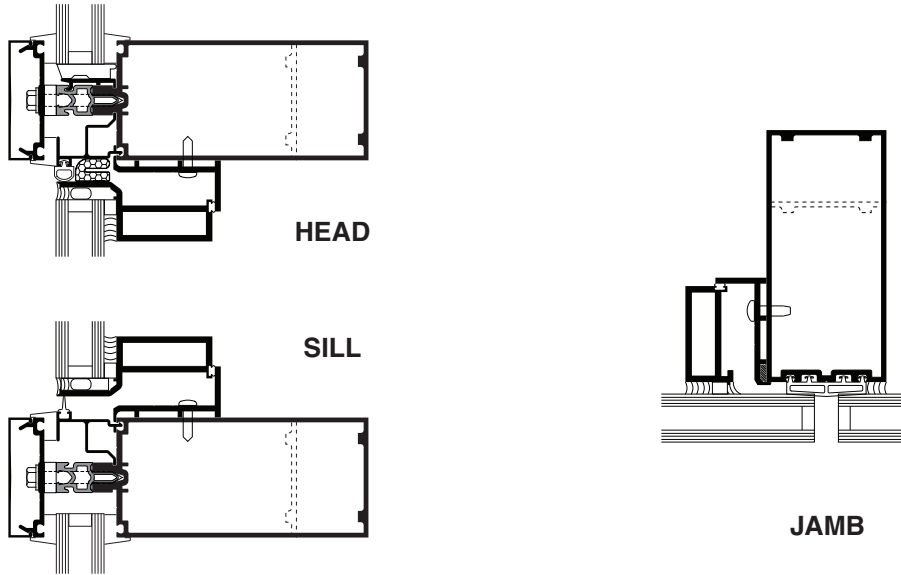
INSIDE SPLAYED MULLIONS

Laws and building and safety codes governing the design and use of glazed entrance, window, and curtain wall products vary widely. Kawneer does not control the selection of product configurations, operating hardware, or glazing materials, and assumes no responsibility therefor.

Kawneer reserves the right to change configuration without prior notice when deemed necessary for product improvement.
© Kawneer Company, Inc., 2013

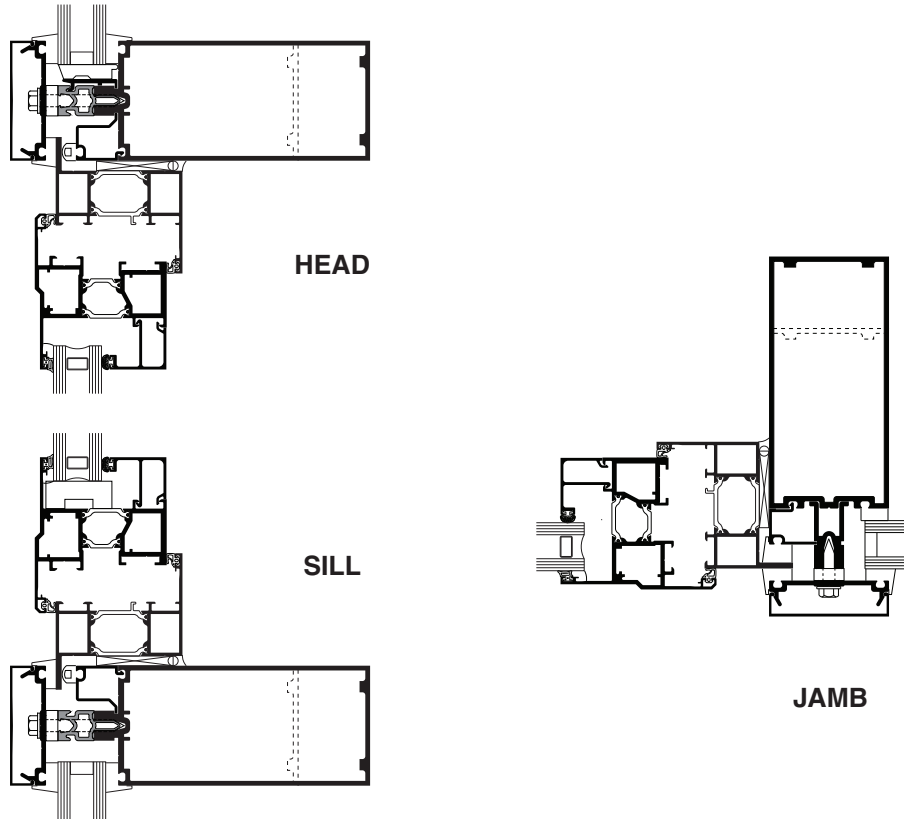
SCALE 3" = 1'-0"

GLASSvent™ Windows for Curtain Wall



NOTE: Project-out GLASSvent™ window shown

AA™900 Thermal Windows

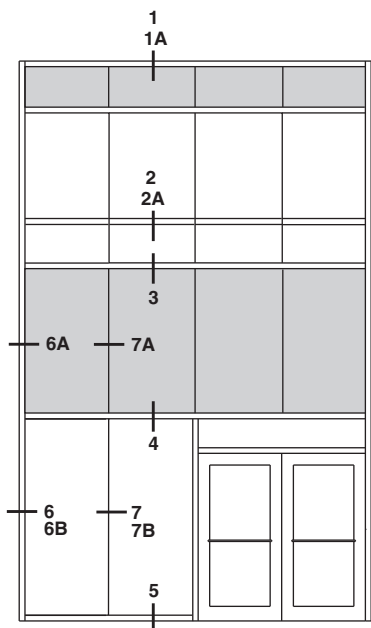


NOTE: AA™6400 vent can be accommodated. Contact your Kawneer representative for other options.

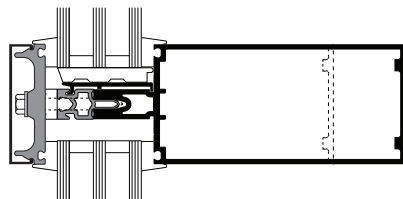
Laws and building and safety codes governing the design and use of glazed entrance, window, and curtain wall products vary widely. Kawneer does not control the selection of product configurations, operating hardware, or glazing materials, and assumes no responsibility therefor.

Kawneer reserves the right to change configuration without prior notice when deemed necessary for product improvement.
© Kawneer Company, Inc., 2013

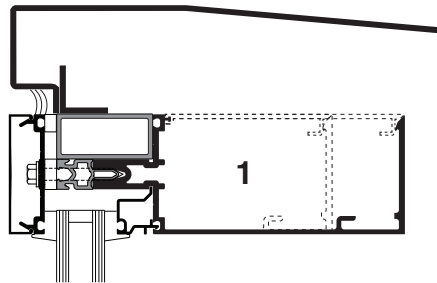
SCALE 3" = 1'-0"



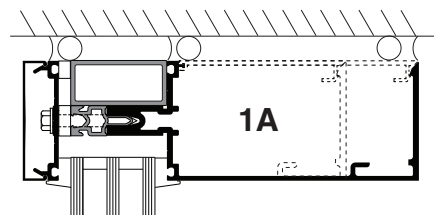
ELEVATION IS NUMBER KEYED TO DETAILS



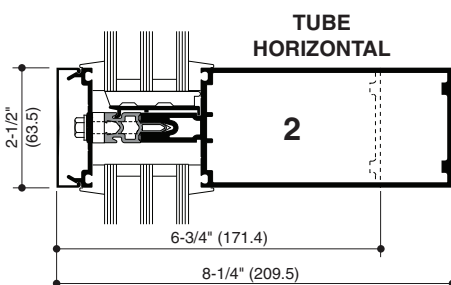
OPTIONAL FIBERGLASS PRESSURE PLATE



1

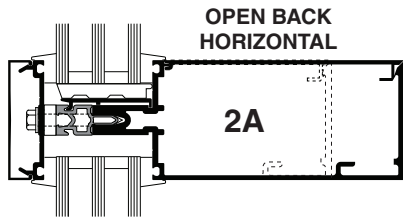


1A



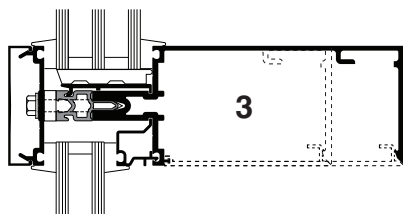
TUBE HORIZONTAL

2

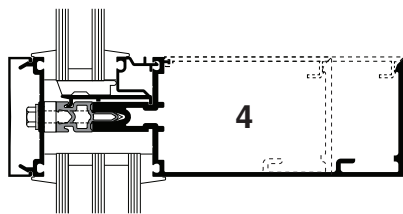


OPEN BACK HORIZONTAL

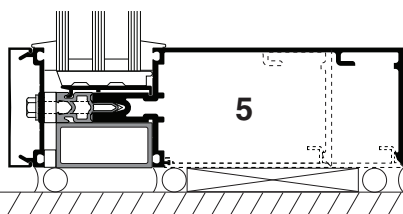
2A



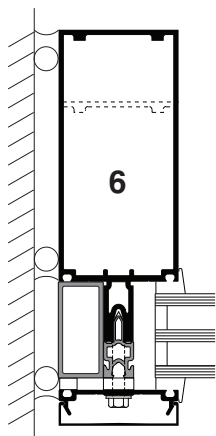
3



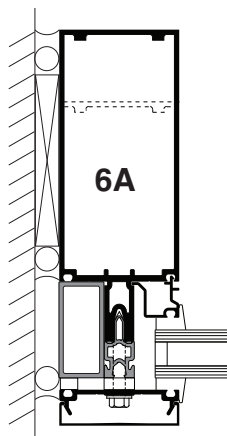
4



5

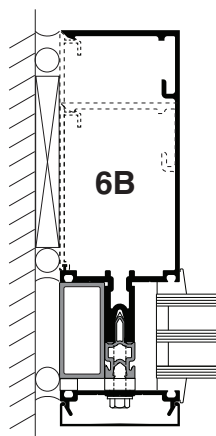


6



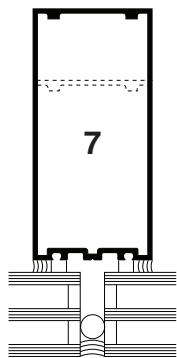
1" INFILL ADAPTER

6A

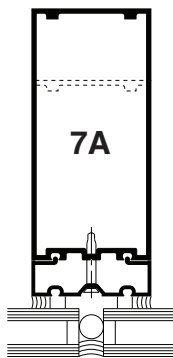


OPEN BACK JAMB

6B

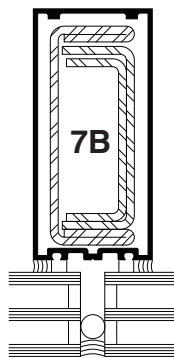


7



1" INFILL ADAPTER

7A



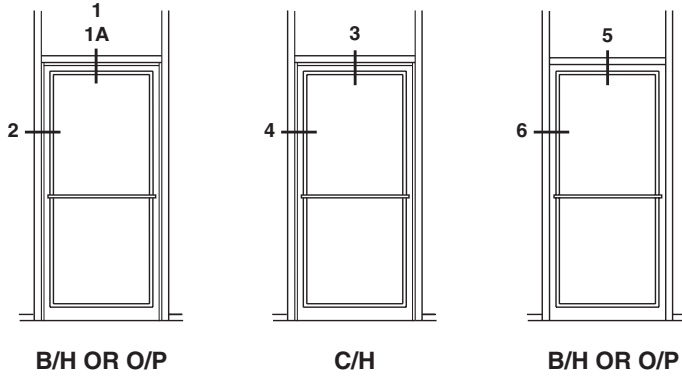
STEEL REINFORCING AS REQUIRED

7B

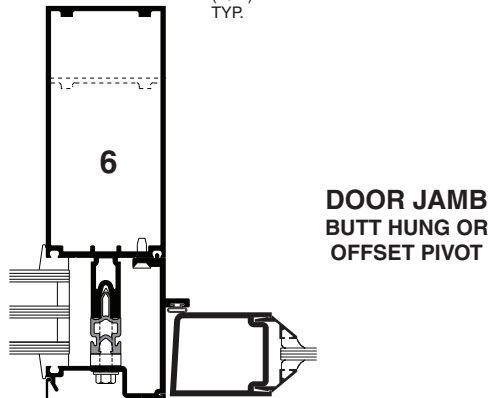
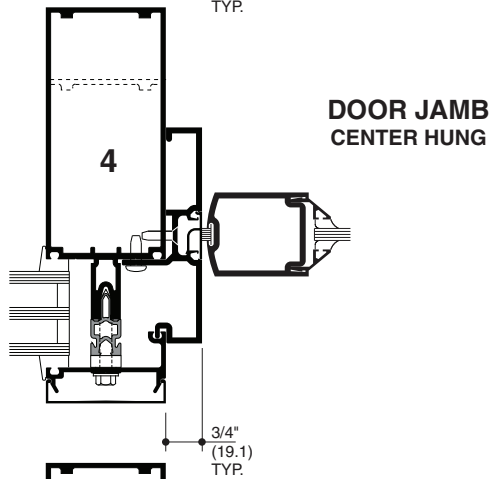
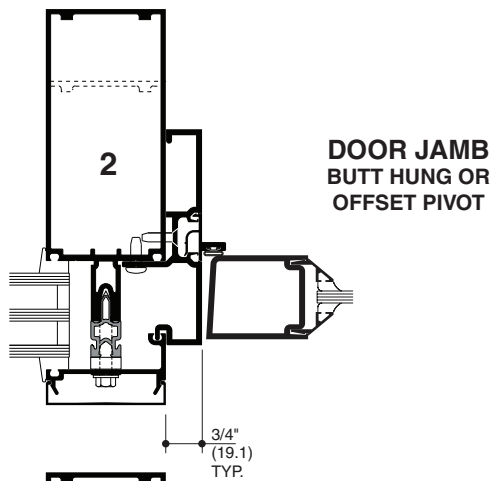
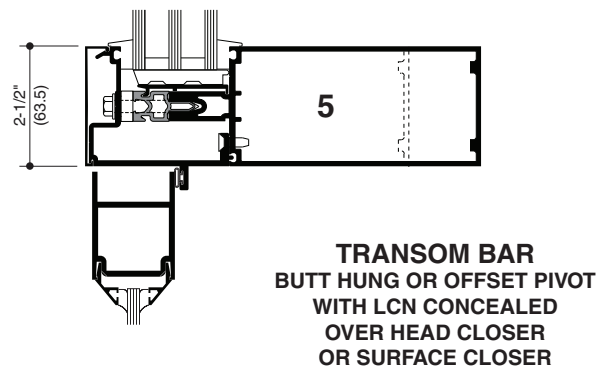
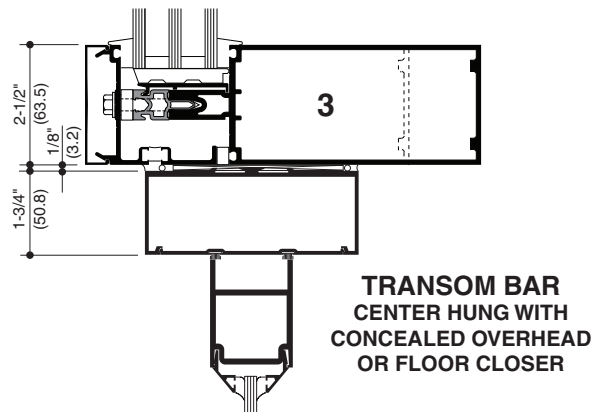
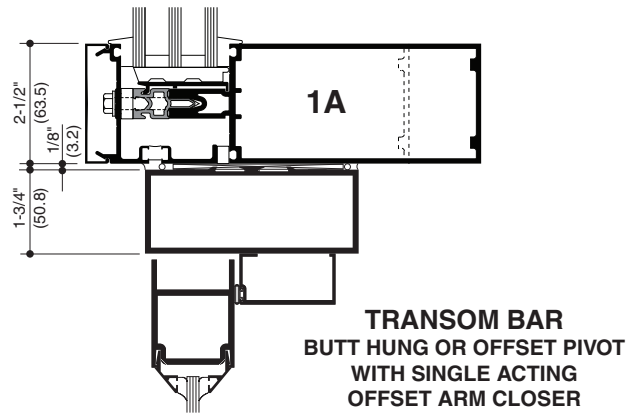
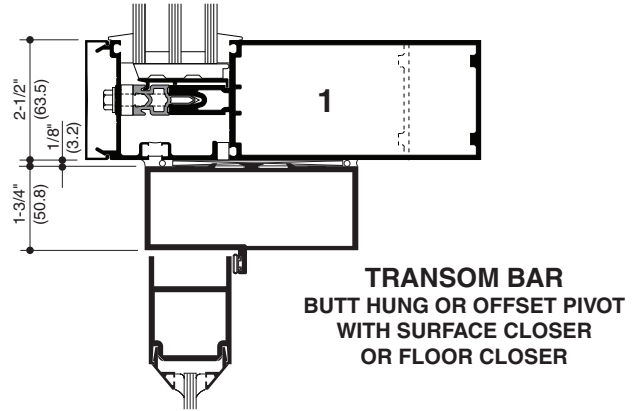
Laws and building and safety codes governing the design and use of glazed entrance, window, and curtain wall products vary widely. Kawneer does not control the selection of product configurations, operating hardware, or glazing materials, and assumes no responsibility therefor.

Kawneer reserves the right to change configuration without prior notice when deemed necessary for product improvement.
© Kawneer Company, Inc., 2013

SCALE 3" = 1'-0"



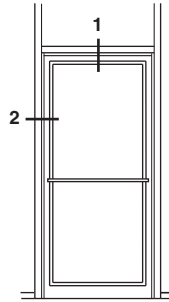
ELEVATION IS NUMBER KEYED TO DETAILS



Laws and building and safety codes governing the design and use of glazed entrance, window, and curtain wall products vary widely. Kawneer does not control the selection of product configurations, operating hardware, or glazing materials, and assumes no responsibility therefor.

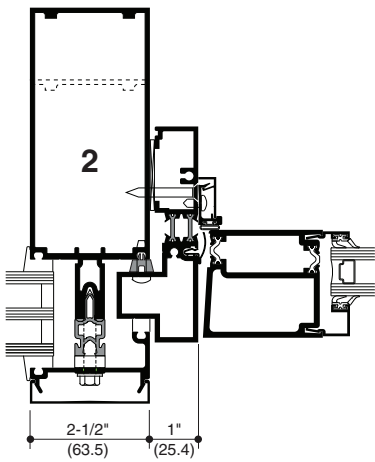
Kawneer reserves the right to change configuration without prior notice when deemed necessary for product improvement.
© Kawneer Company, Inc., 2013

SCALE 3" = 1'-0"

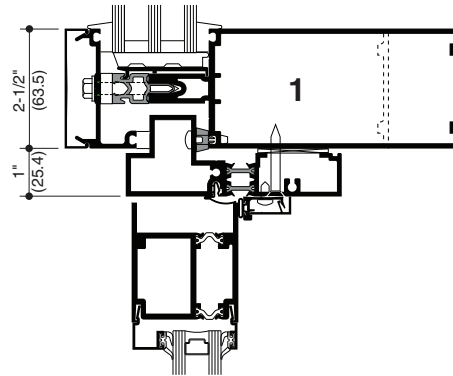


B/H OR O/P

ELEVATION IS NUMBER KEYED TO DETAILS



**DOOR JAMB
BUTT HUNG OR
OFFSET PIVOT**

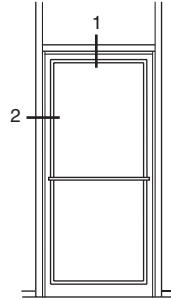


**TRANSOM BAR
BUTT HUNG OR
OFFSET PIVOT WITH
SURFACE CLOSER
OR FLOOR CLOSER**

Laws and building and safety codes governing the design and use of glazed entrance, window, and curtain wall products vary widely. Kawneer does not control the selection of product configurations, operating hardware, or glazing materials, and assumes no responsibility therefor.

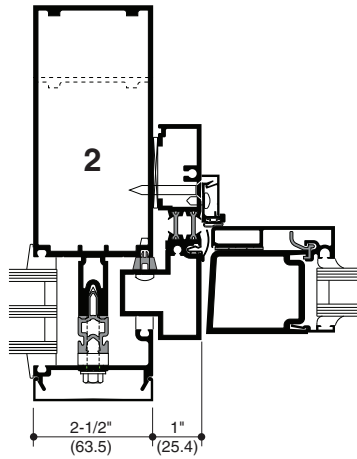
Kawneer reserves the right to change configuration without prior notice when deemed necessary for product improvement.
© Kawneer Company, Inc., 2013

SCALE 3" = 1'-0"

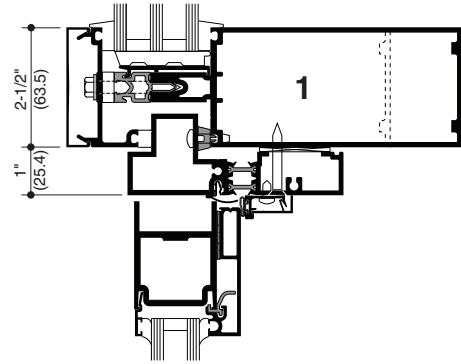


B/H OR O/P

ELEVATION IS NUMBER KEYED TO DETAILS



**DOOR JAMB
BUTT HUNG OR
OFFSET PIVOT**

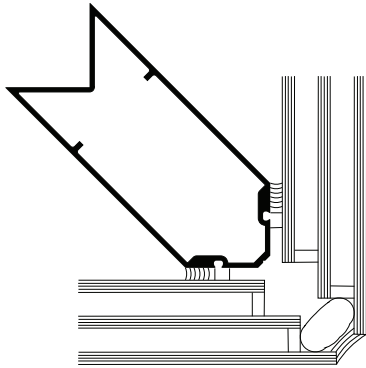


**TRANSOM BAR
BUTT HUNG OR
OFFSET PIVOT WITH
SURFACE CLOSER
OR FLOOR CLOSER**

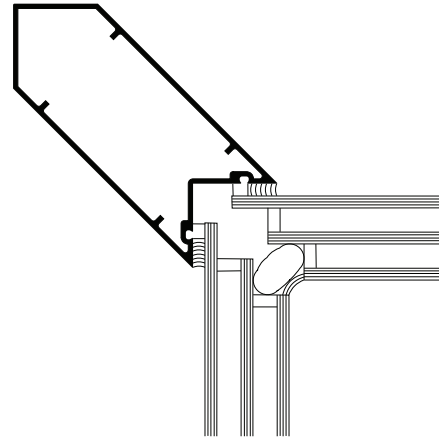
Laws and building and safety codes governing the design and use of glazed entrance, window, and curtain wall products vary widely. Kawneer does not control the selection of product configurations, operating hardware, or glazing materials, and assumes no responsibility therefor.

Kawneer reserves the right to change configuration without prior notice when deemed necessary for product improvement.
© Kawneer Company, Inc., 2013

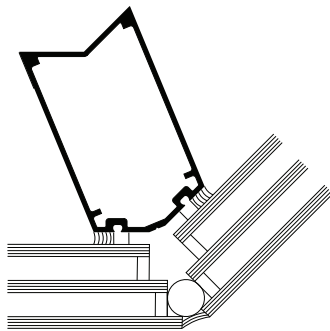
SCALE 3" = 1'-0"



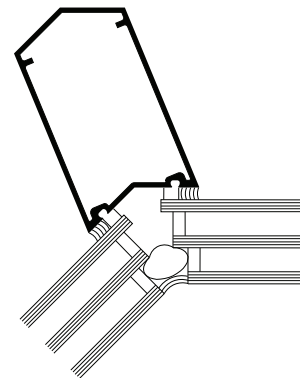
90° OUTSIDE CORNER



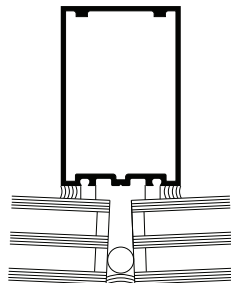
90° INSIDE CORNER



135° OUTSIDE CORNER

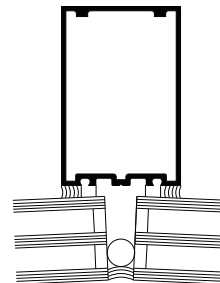


135° INSIDE CORNER



0° TO 5°

OUTSIDE SPLAYED MULLIONS



0° TO 5°

INSIDE SPLAYED MULLIONS

OTHER SPLAY OPTIONS AVAILABLE

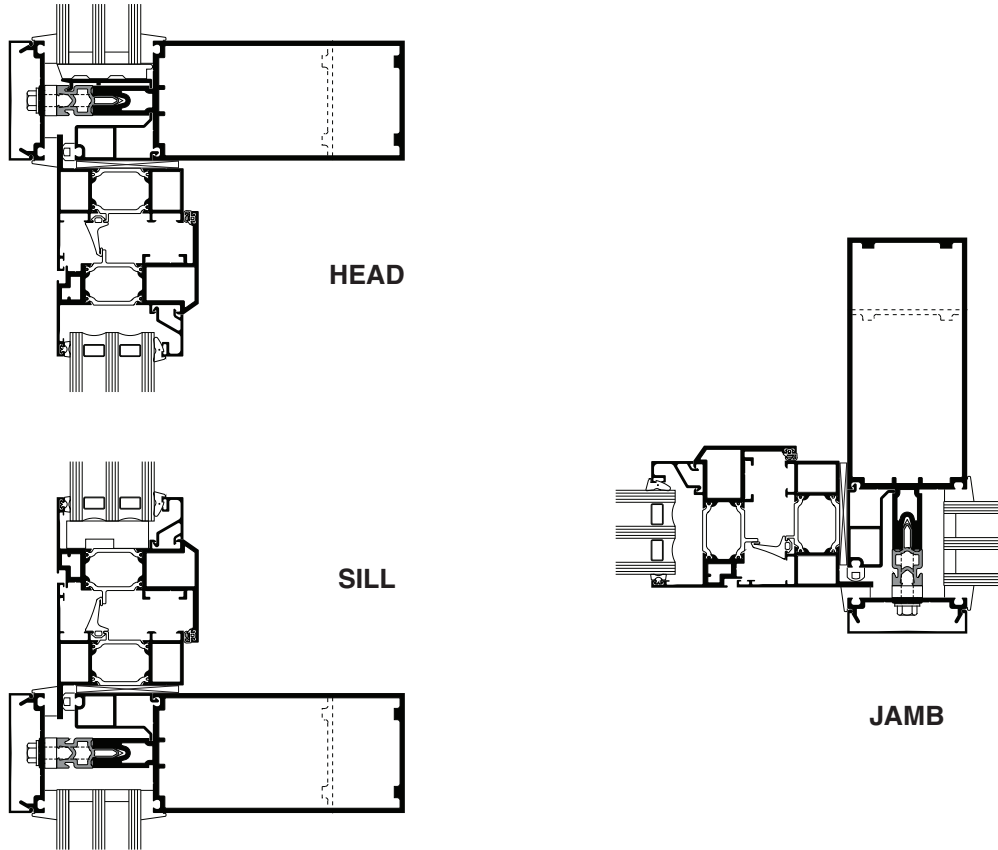
Laws and building and safety codes governing the design and use of glazed entrance, window, and curtain wall products vary widely. Kawneer does not control the selection of product configurations, operating hardware, or glazing materials, and assumes no responsibility therefor.

Kawneer reserves the right to change configuration without prior notice when deemed necessary for product improvement.

© Kawneer Company, Inc., 2013

SCALE 3" = 1'-0"

AA™900 Thermal Windows

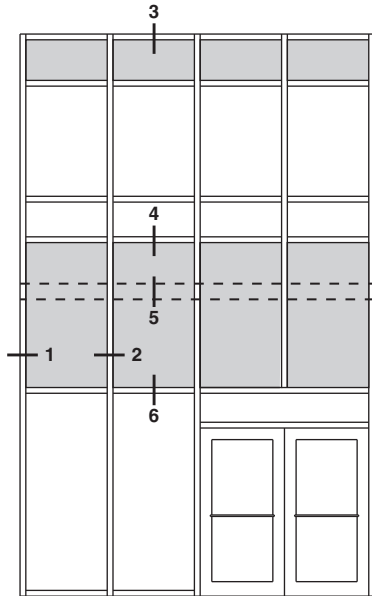


NOTE: AA™6400 vent can be accommodated.
Contact your Kawneer representative for other options.

Laws and building and safety codes governing the design and use of glazed entrance, window, and curtain wall products vary widely. Kawneer does not control the selection of product configurations, operating hardware, or glazing materials, and assumes no responsibility therefor.

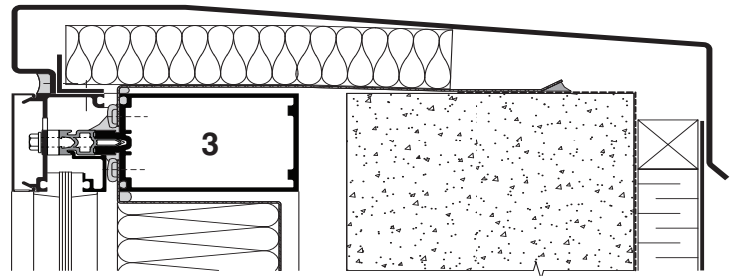
Kawneer reserves the right to change configuration without prior notice when deemed necessary for product improvement.
© Kawneer Company, Inc., 2013

SCALE 3" = 1'-0"

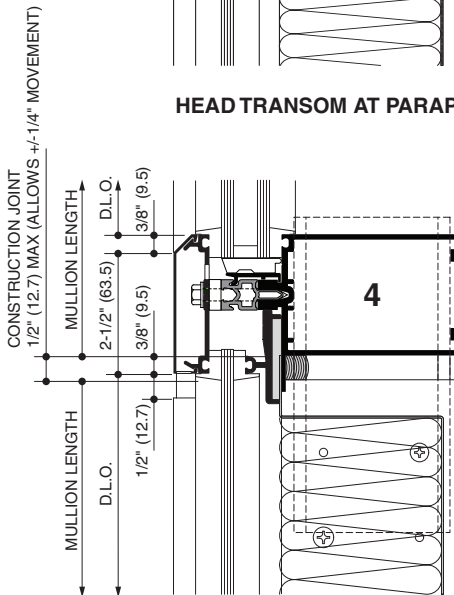


ELEVATION IS NUMBER KEYED TO DETAILS

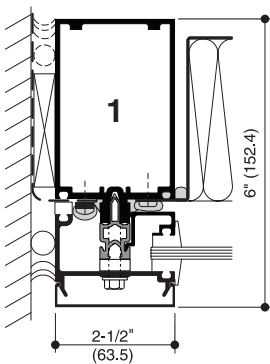
NOTE: 6" SYSTEM SHOWN, 7-1/2" SYSTEM SIMILAR



HEAD TRANSOM AT PARAPET FLASHING

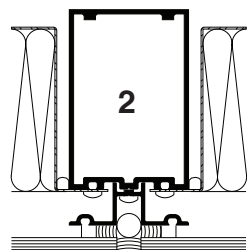


EXPANSION JOINT

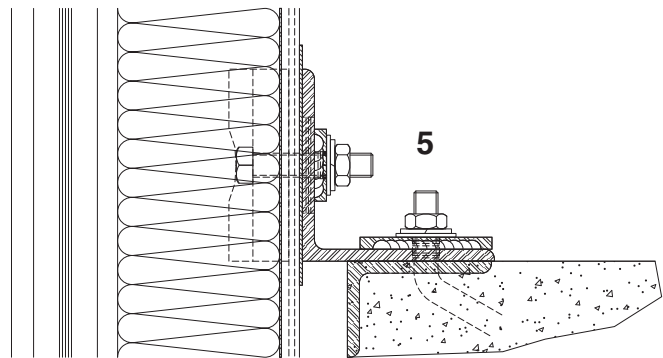


JAMB MULLION AT SPANDREL

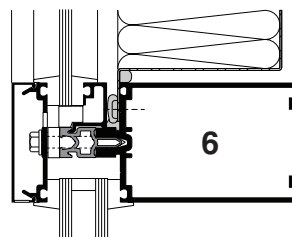
(With vapor barrier tie-in)



MULLION AT SPANDREL



TYPICAL DEADLOAD ANCHOR

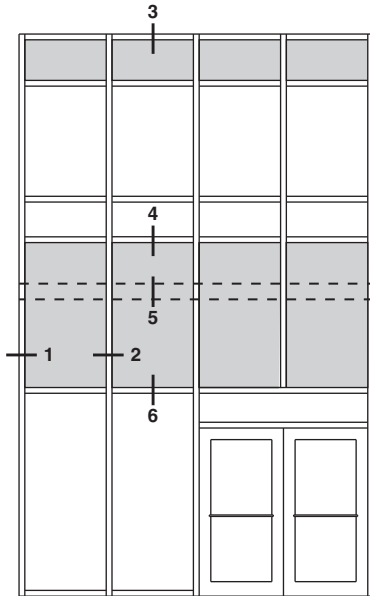


TRANSOM - SPANDREL OVER VISION

Laws and building and safety codes governing the design and use of glazed entrance, window, and curtain wall products vary widely. Kawneer does not control the selection of product configurations, operating hardware, or glazing materials, and assumes no responsibility therefor.

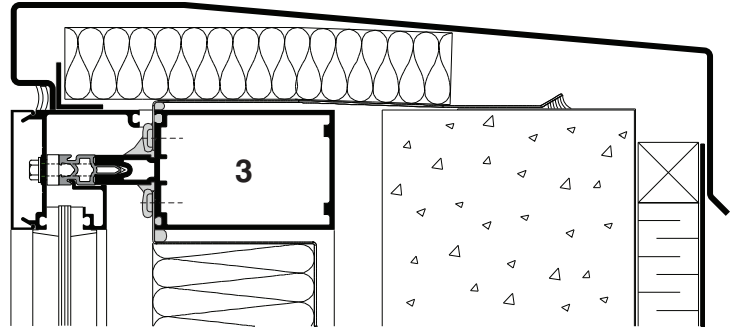
Kawneer reserves the right to change configuration without prior notice when deemed necessary for product improvement.
© Kawneer Company, Inc., 2013

SCALE 3" = 1'-0"

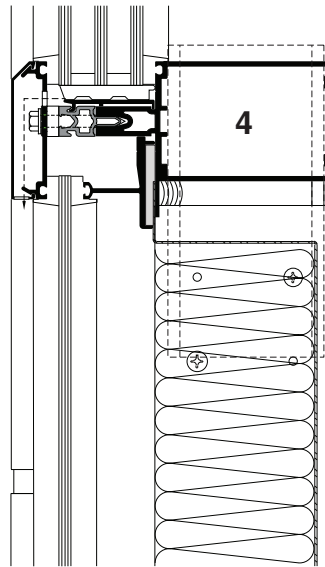


ELEVATION IS NUMBER KEYED TO DETAILS

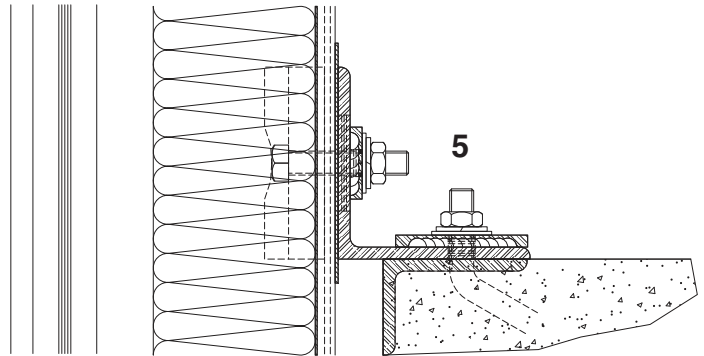
NOTE: 6" SYSTEM SHOWN, 7-1/2" SYSTEM SIMILAR



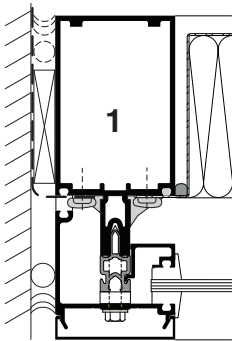
HEAD TRANSOM AT PARAPET FLASHING



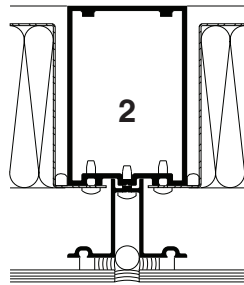
EXPANSION JOINT



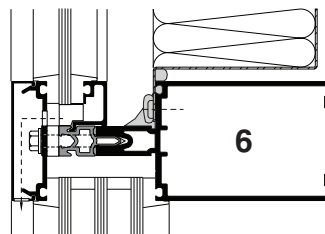
TYPICAL DEADLOAD ANCHOR



JAMB MULLION AT SPANDREL



MULLION AT SPANDREL



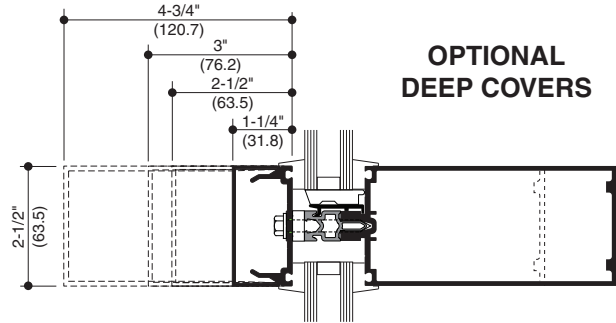
TRANSOM - SPANDREL OVER VISION

Laws and building and safety codes governing the design and use of glazed entrance, window, and curtain wall products vary widely. Kawneer does not control the selection of product configurations, operating hardware, or glazing materials, and assumes no responsibility therefor.

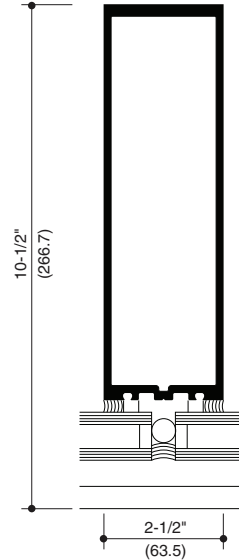
Kawneer reserves the right to change configuration without prior notice when deemed necessary for product improvement.
 © Kawneer Company, Inc., 2013

SCALE 3" = 1'-0"

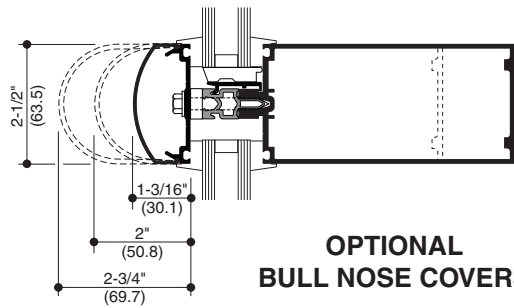
Architects – Most extrusion and window types illustrated in this catalog are standard products for Kawneer. These concepts have been expanded and modified to afford you design freedom. Some miscellaneous details are non-standard and are intended to demonstrate how the system can be modified to expand design flexibility. Please contact your Kawneer representative for further assistance.



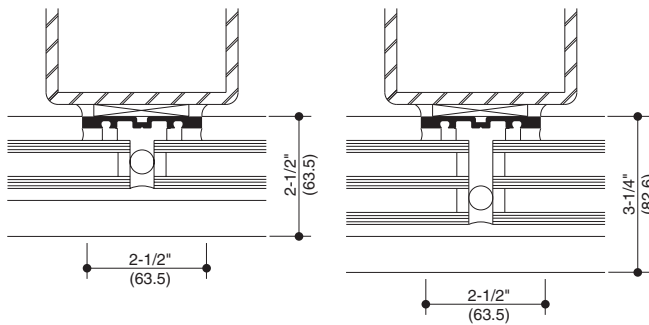
OPTIONAL DEEP COVERS



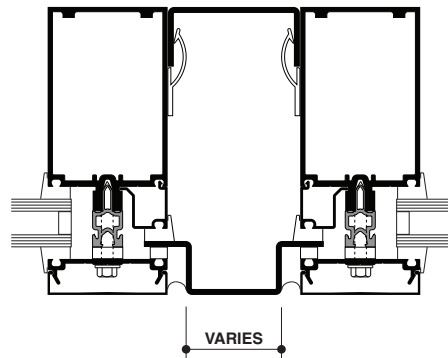
DEEP MULLION



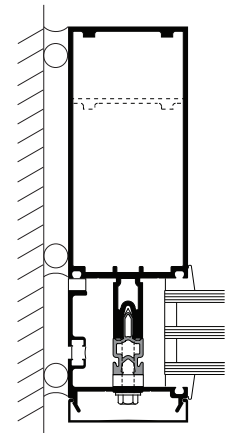
OPTIONAL BULL NOSE COVERS



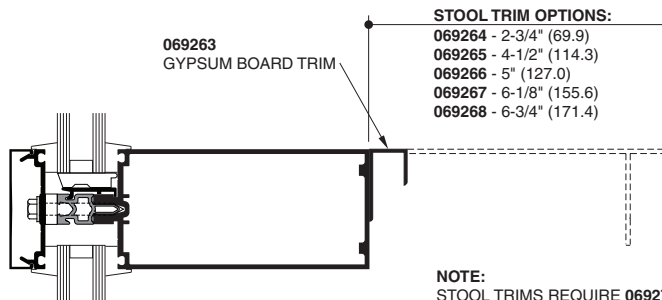
VENEER SYSTEM



DOUBLE MULLION



THERMAL PERIMETER PRESSURE PLATE



069263
GYPSUM BOARD TRIM

STOOL TRIM OPTIONS:

- 069264 - 2-3/4" (69.9)
- 069265 - 4-1/2" (114.3)
- 069266 - 5" (127.0)
- 069267 - 6-1/8" (155.6)
- 069268 - 6-3/4" (171.4)

NOTE:
STOOL TRIMS REQUIRE 069271 TRIM CLIP PACKAGE

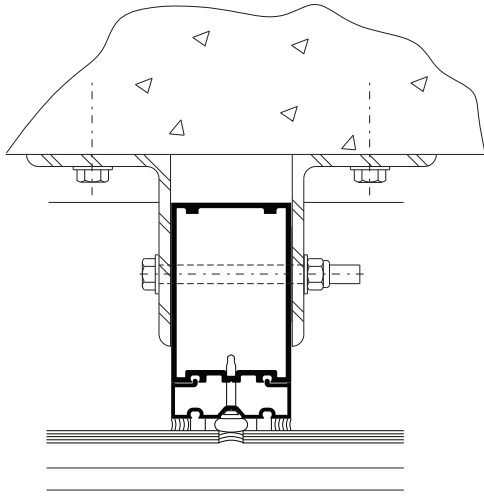
INTERIOR STOOL TRIM

Laws and building and safety codes governing the design and use of glazed entrance, window, and curtain wall products vary widely. Kawneer does not control the selection of product configurations, operating hardware, or glazing materials, and assumes no responsibility therefor.

Kawneer reserves the right to change configuration without prior notice when deemed necessary for product improvement.

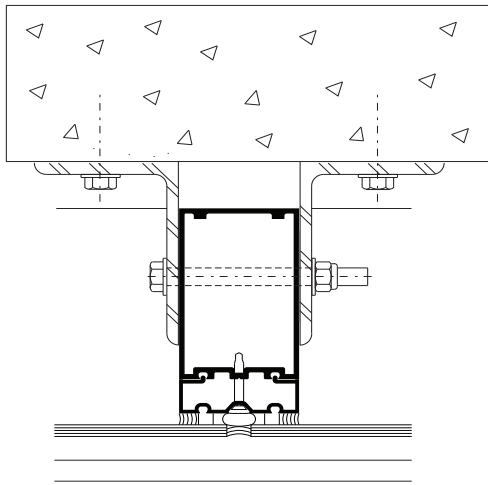
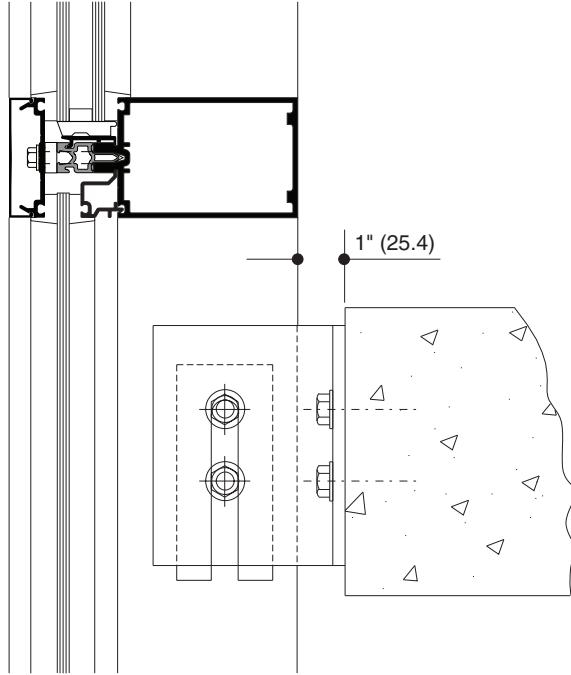
© Kawneer Company, Inc., 2013

Actual project conditions will determine specific anchor design. Details on this page are for reference only.



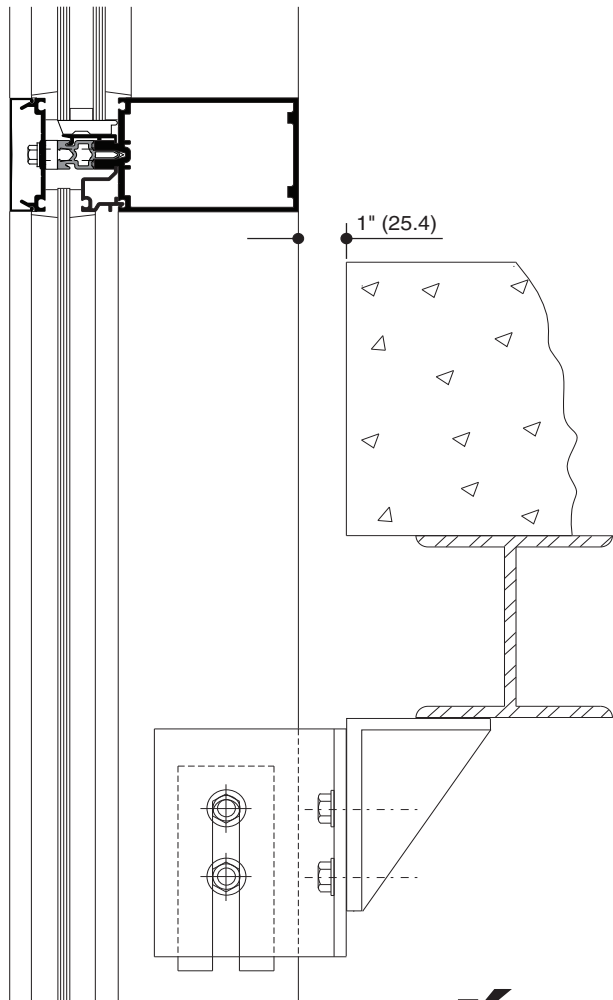
ANCHORING TO FLOOR SLAB

NOTE: 1-3/4" triple glazing similar.



ANCHORING TO SUPPORT STEEL

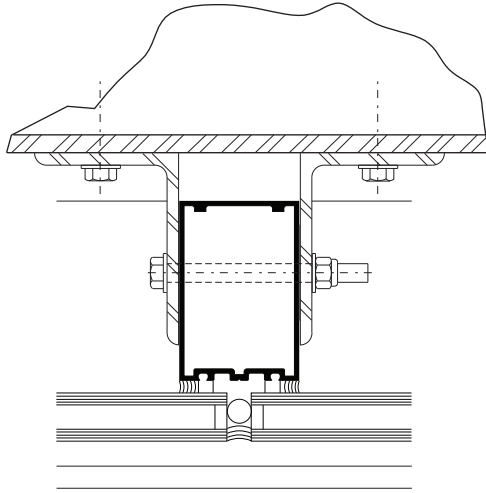
NOTE: 1-3/4" triple glazing similar.



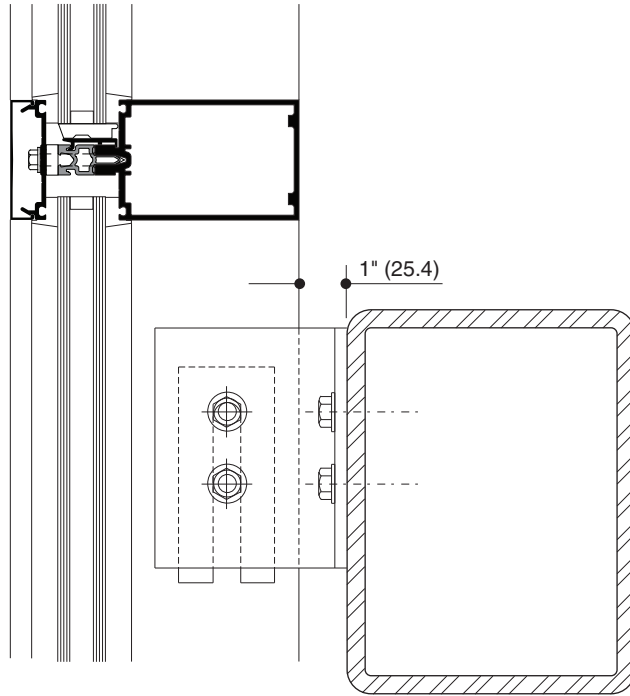
Laws and building and safety codes governing the design and use of glazed entrance, window, and curtain wall products vary widely. Kawneer does not control the selection of product configurations, operating hardware, or glazing materials, and assumes no responsibility therefor.

Kawneer reserves the right to change configuration without prior notice when deemed necessary for product improvement.
© Kawneer Company, Inc., 2013

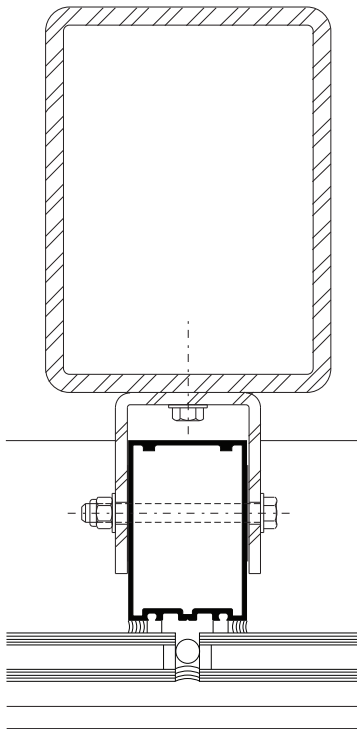
Actual project conditions will determine specific anchor design. Details on this page are for reference only.



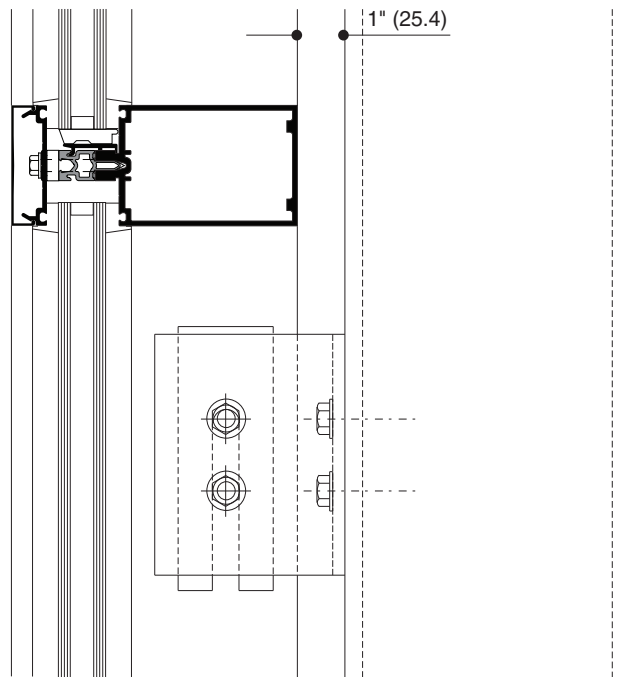
ANCHORING TO HORIZONTAL STRUCTURAL STEEL



NOTE: 1-3/4" triple glazing similar.



ANCHORING TO VERTICAL STRUCTURAL STEEL



NOTE: 1-3/4" triple glazing similar.

Laws and building and safety codes governing the design and use of glazed entrance, window, and curtain wall products vary widely. Kawneer does not control the selection of product configurations, operating hardware, or glazing materials, and assumes no responsibility therefor.

Kawneer reserves the right to change configuration without prior notice when deemed necessary for product improvement.
© Kawneer Company, Inc., 2013

WIND LOAD CHARTS

Mullions are designed for deflection limitations in accordance with AAMA TIR-A11 of L/175 up to 13'-6" and L/240 +1/4" above 13'-6". These curves are for mullions WITH HORIZONTALS and are based on engineering calculations for stress and deflection. Allowable wind load stress for ALUMINUM 15,152 psi (104MPa), STEEL 30,000 psi (207MPa.). Charted curves, in all cases are for the limiting value. Wind load charts contained herein are based upon nominal wind load utilized in allowable stress design. To convert ultimate wind loads to nominal loads, multiply ultimate wind loads by a factor of 0.6 per ASCE/SEI 7. A 4/3 increase in allowable stress has not been used to develop these curves. For special situations not covered by these curves, contact your Kawneer representative for additional information.

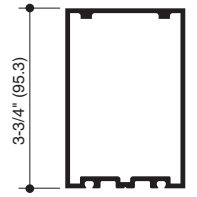
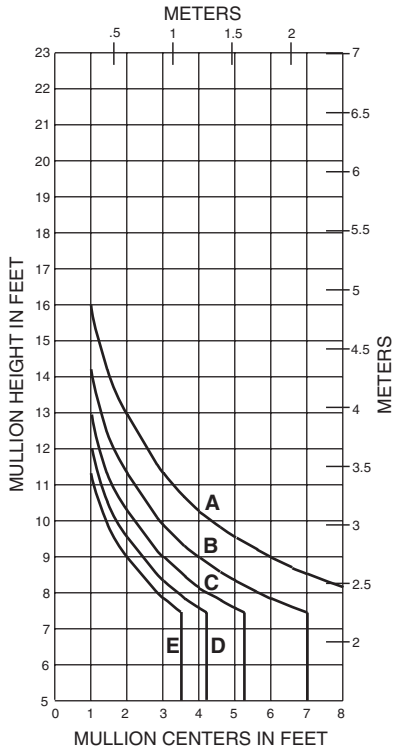
DEADLOAD CHARTS

Horizontal or deadload limitations are based upon 1/8" (3.2), maximum allowable deflection at the center of an intermediate horizontal member. The accompanying charts are calculated for 1" (25.4) thick insulating glass or 1-3/4" (44.5) thick glass supported on two setting blocks placed at the loading points shown.

Laws and building and safety codes governing the design and use of glazed entrance, window, and curtain wall products vary widely. Kawneer does not control the selection of product configurations, operating hardware, or glazing materials, and assumes no responsibility therefor.

Kawneer reserves the right to change configuration without prior notice when deemed necessary for product improvement.
© Kawneer Company, Inc., 2013

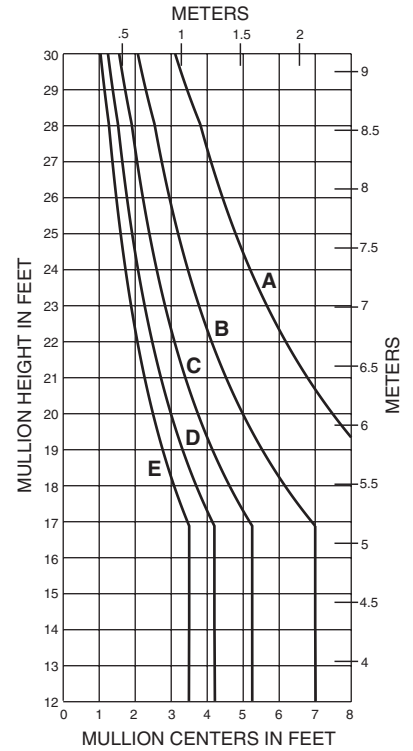
SINGLE SPAN



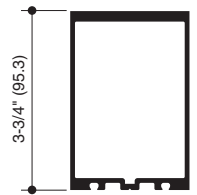
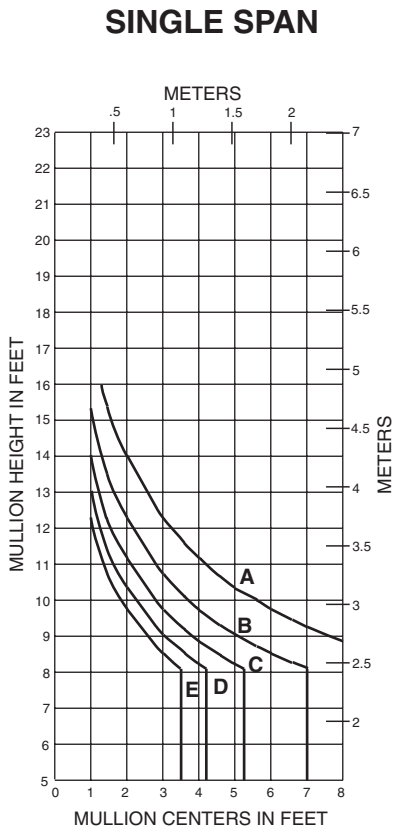
162025
 $I = 2.860 (119.04 \times 10^4)$
 $S = 1.482 (24.28 \times 10^3)$

- A = 20 PSF (960)
- B = 30 PSF (1440)
- C = 40 PSF (1920)
- D = 50 PSF (2400)
- E = 60 PSF (2880)

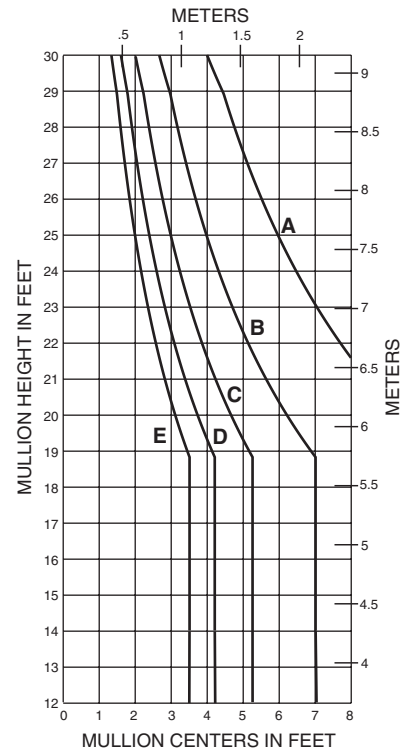
TWIN SPAN



TWIN SPAN



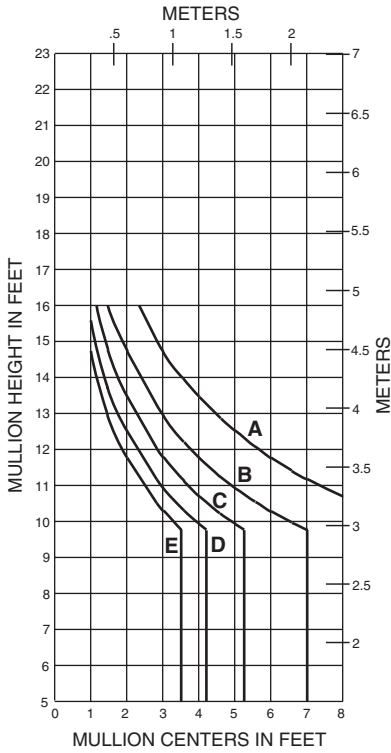
162026
 $I = 3.660 (152.34 \times 10^4)$
 $S = 1.840 (30.15 \times 10^3)$



Laws and building and safety codes governing the design and use of glazed entrance, window, and curtain wall products vary widely. Kawneer does not control the selection of product configurations, operating hardware, or glazing materials, and assumes no responsibility therefor.

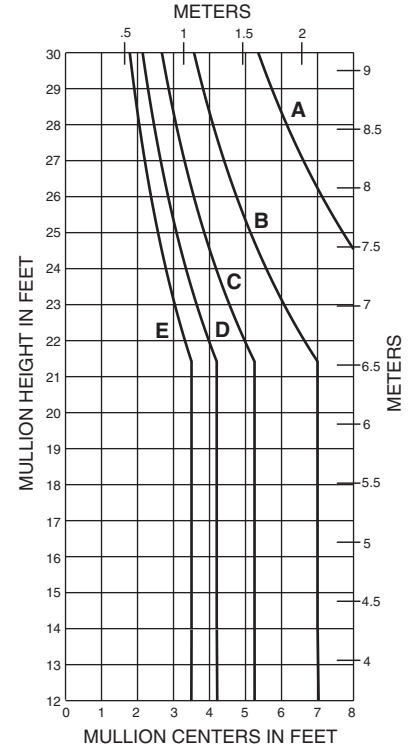
Kawneer reserves the right to change configuration without prior notice when deemed necessary for product improvement.
 © Kawneer Company, Inc., 2013

SINGLE SPAN



- A = 20 PSF (960)
- B = 30 PSF (1440)
- C = 40 PSF (1920)
- D = 50 PSF (2400)
- E = 60 PSF (2880)

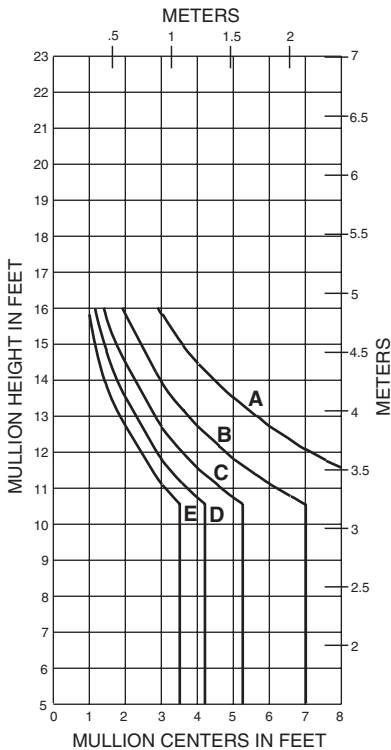
TWIN SPAN



162027

I = 6.424(267.38 x 10⁴)
S = 2.385(39.08 x 10³)

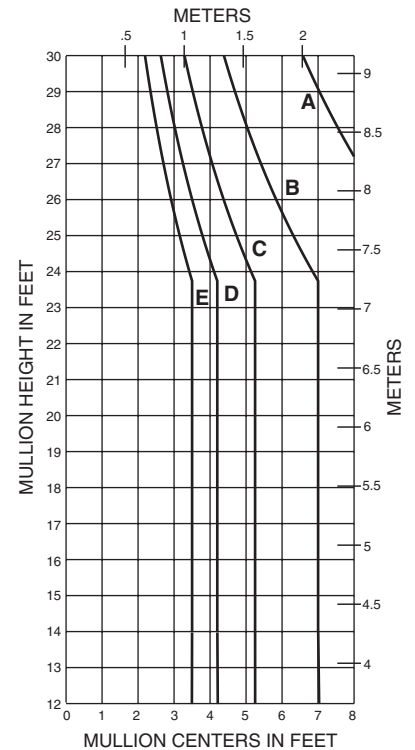
SINGLE SPAN



162028

I = 8.088(336.64 x 10⁴)
S = 2.930(48.01 x 10³)

TWIN SPAN

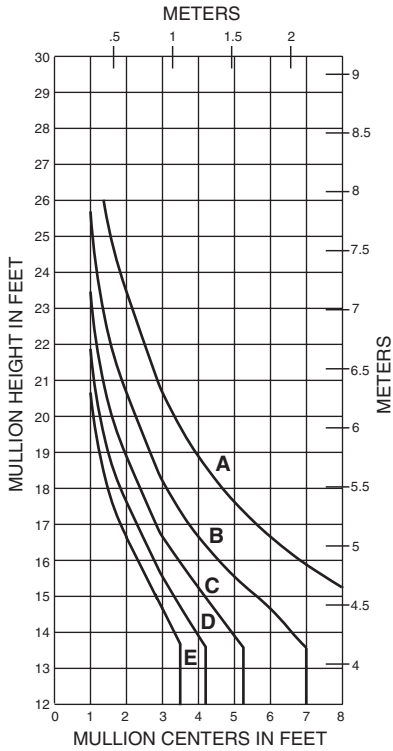


Laws and building and safety codes governing the design and use of glazed entrance, window, and curtain wall products vary widely. Kawneer does not control the selection of product configurations, operating hardware, or glazing materials, and assumes no responsibility therefor.

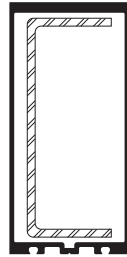
Kawneer reserves the right to change configuration without prior notice when deemed necessary for product improvement.
© Kawneer Company, Inc., 2013

SINGLE SPAN

162028 W/162300

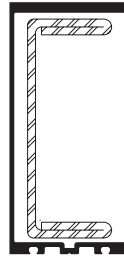


- A = 20 PSF (960)
- B = 30 PSF (1440)
- C = 40 PSF (1920)
- D = 50 PSF (2400)
- E = 60 PSF (2880)



**162028
W/162300**

la = 8.088(336.64 x 10⁴)
 Sa = 2.930(48.01 x 10³)
 Is = 3.805(158.37 x 10⁴)
 Ss = 1.669(27.35 x 10³)

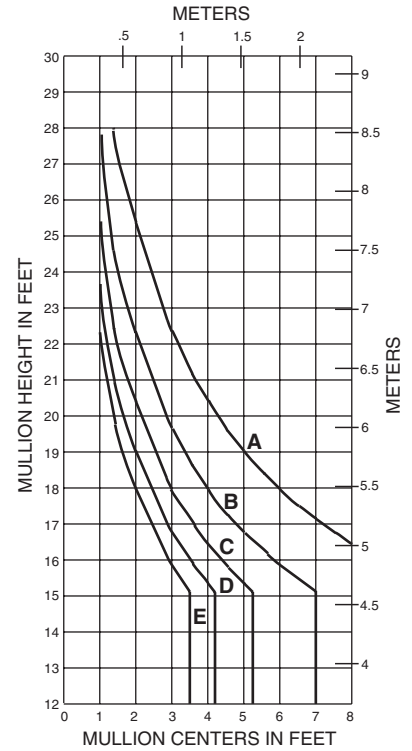


**162028
W/162301**

la = 8.088(336.64 x 10⁴)
 Sa = 2.930(48.01 x 10³)
 Is = 5.684(236.59 x 10⁴)
 Ss = 2.493(40.85 x 10³)

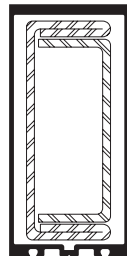
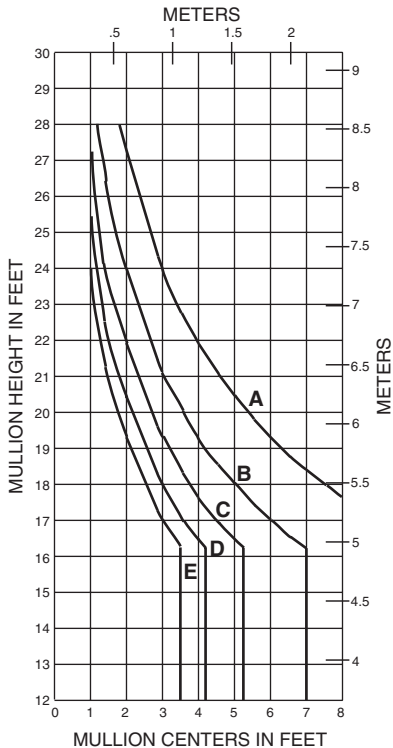
SINGLE SPAN

162028 W/162301



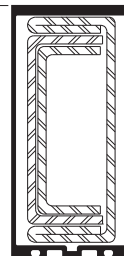
SINGLE SPAN

162028 W/162301/302



**162028
W/162301/302**

la = 8.088(336.64 x 10⁴)
 Sa = 2.930(48.01 x 10³)
 Is = 7.893(328.53 x 10⁴)
 Ss = 3.462(56.73 x 10³)

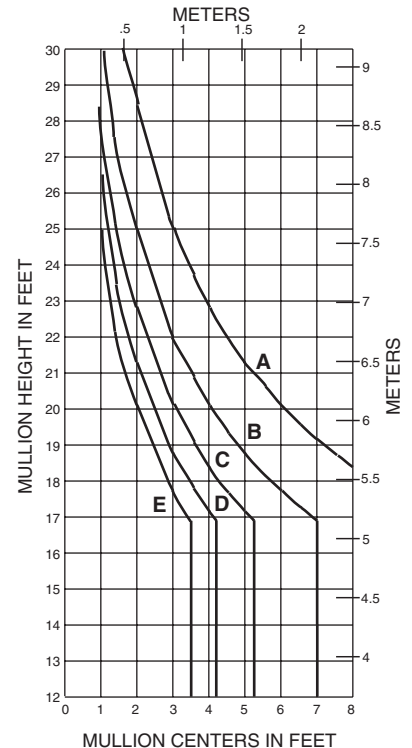


**162028
W/162301/302/303**

la = 8.088(336.64 x 10⁴)
 Sa = 2.930(48.01 x 10³)
 Is = 9.347(389.05 x 10⁴)
 Ss = 4.100(67.19 x 10³)

SINGLE SPAN

162028 W/162301/302/303



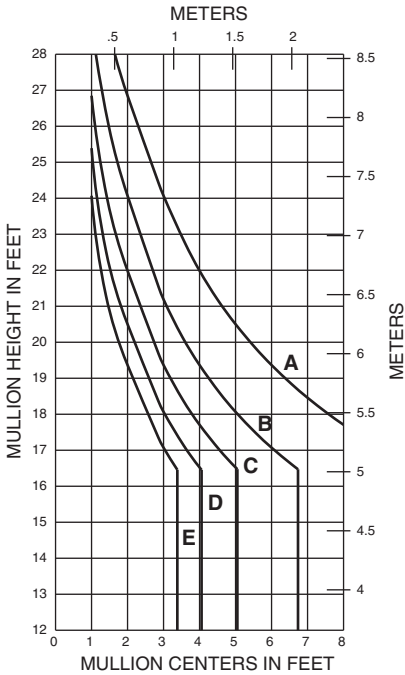
Laws and building and safety codes governing the design and use of glazed entrance, window, and curtain wall products vary widely. Kawneer does not control the selection of product configurations, operating hardware, or glazing materials, and assumes no responsibility therefor.

Kawneer reserves the right to change configuration without prior notice when deemed necessary for product improvement.

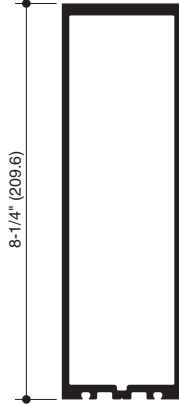
© Kawneer Company, Inc., 2013

SINGLE SPAN

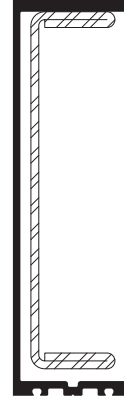
162028 W/162300



- A = 20 PSF (960)
- B = 30 PSF (1440)
- C = 40 PSF (1920)
- D = 50 PSF (2400)
- E = 60 PSF (2880)



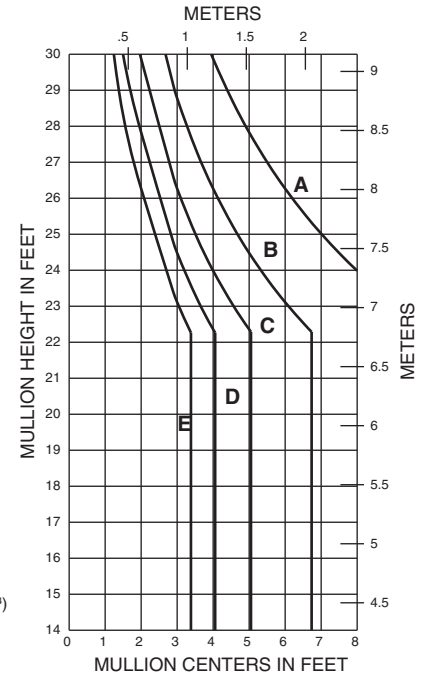
162076
 $I = 31.174(1,297.56 \times 10^4)$
 $S = 7.452(122.12 \times 10^3)$



162076
W/162363
 $I_a = 31.174(1,297.56 \times 10^4)$
 $S_a = 7.452(122.12 \times 10^3)$
 $I_s = 17.600(732.56 \times 10^4)$
 $S_s = 4.732(77.54 \times 10^3)$

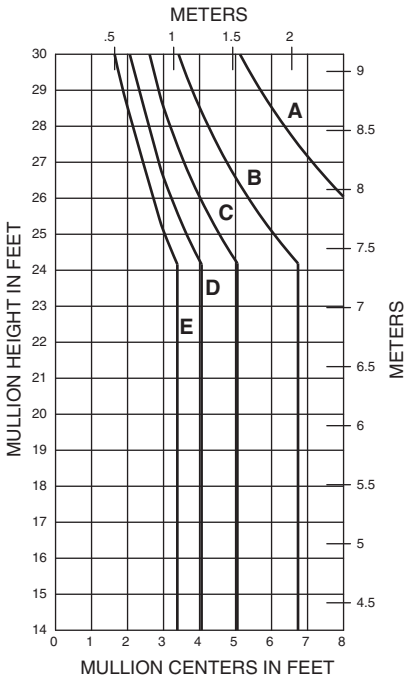
SINGLE SPAN

162028 W/162301

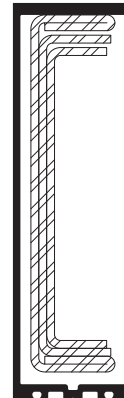


SINGLE SPAN

162028 W/162301/302



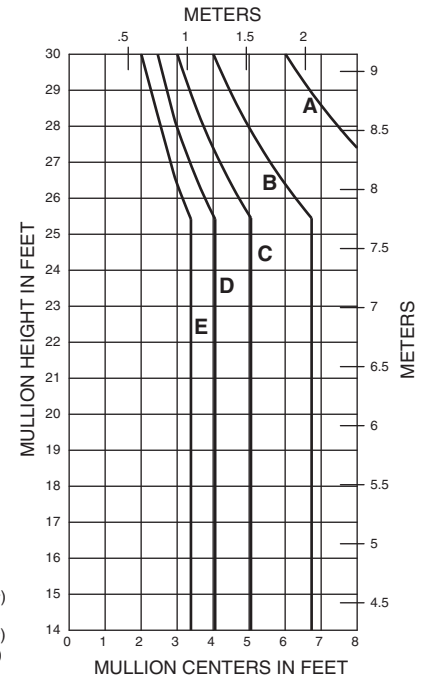
162076
W/162363/364
 $I_a = 31.174(1,297.56 \times 10^4)$
 $S_a = 7.452(122.12 \times 10^3)$
 $I_s = 26.033(1,083.57 \times 10^4)$
 $S_s = 7.000(114.71 \times 10^3)$



162076
W/162363/364/365
 $I_a = 31.174(1,297.56 \times 10^4)$
 $S_a = 7.452(122.12 \times 10^3)$
 $I_s = 32.432(1,349.92 \times 10^4)$
 $S_s = 32.432(531.46 \times 10^3)$

SINGLE SPAN

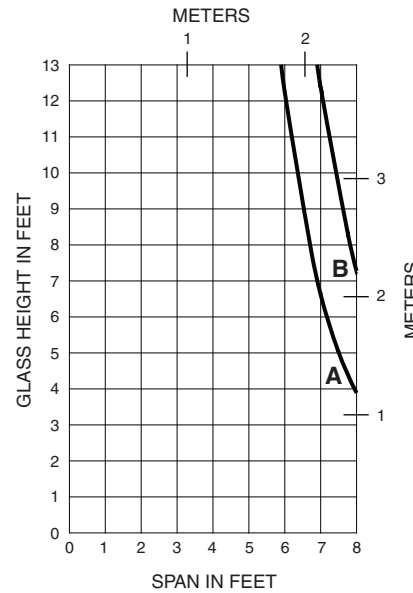
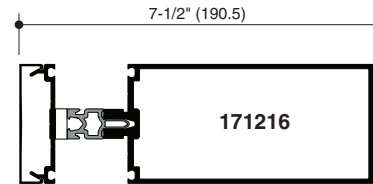
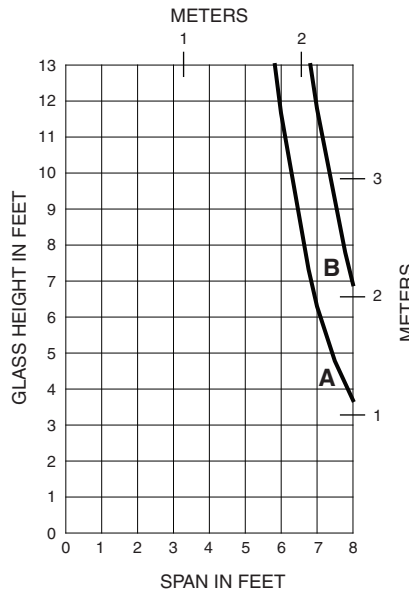
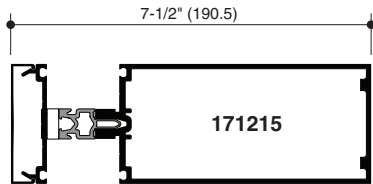
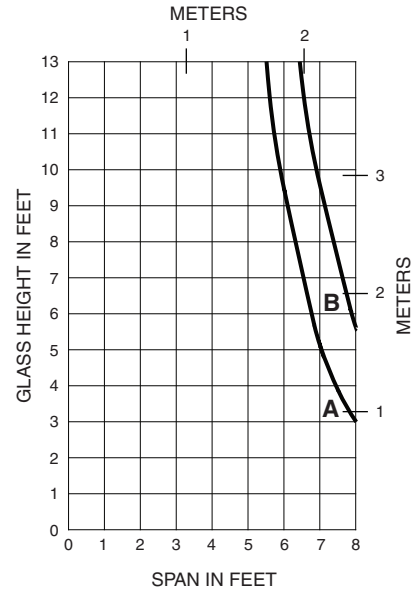
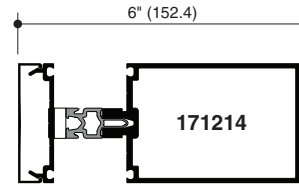
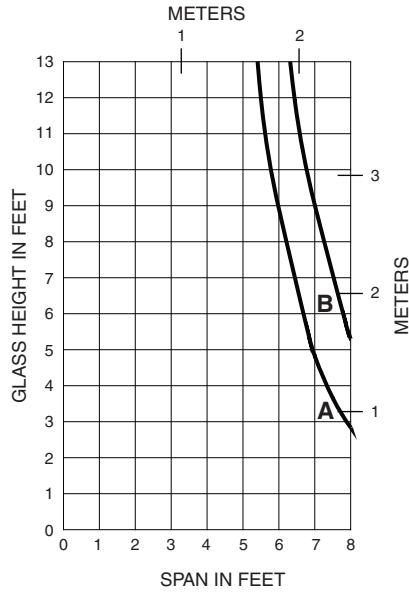
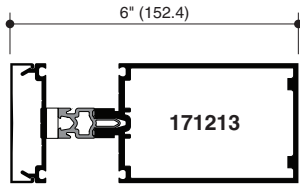
162028 W/162301/302/303



Laws and building and safety codes governing the design and use of glazed entrance, window, and curtain wall products vary widely. Kawneer does not control the selection of product configurations, operating hardware, or glazing materials, and assumes no responsibility therefor.

Kawneer reserves the right to change configuration without prior notice when deemed necessary for product improvement.
 © Kawneer Company, Inc., 2013

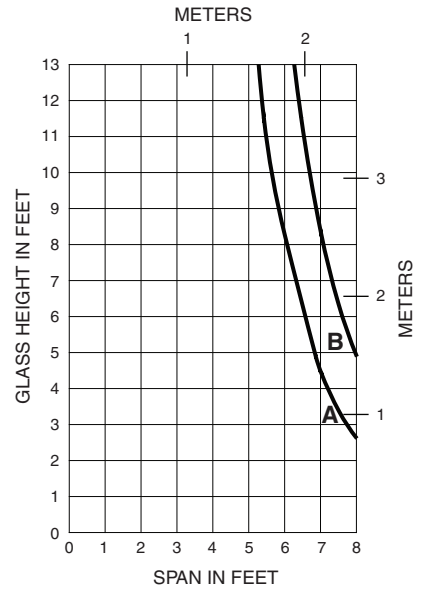
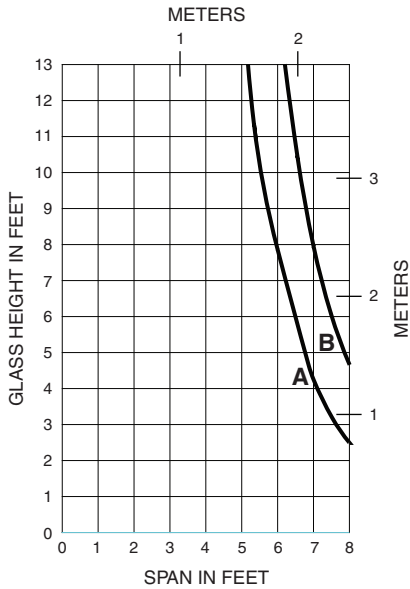
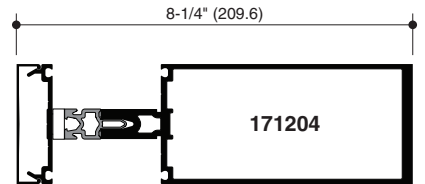
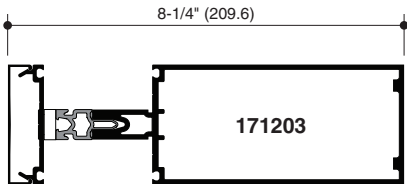
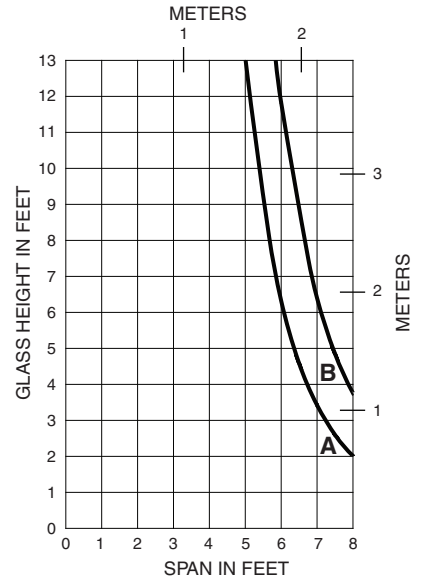
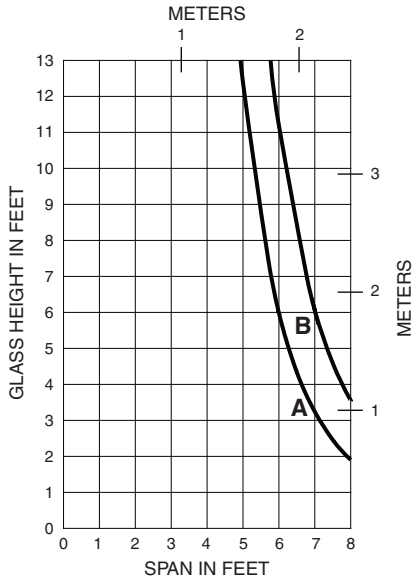
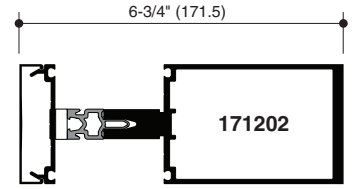
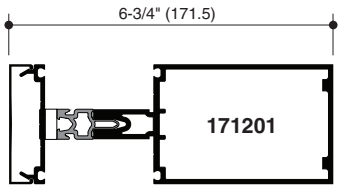
A - 1" GLASS (1/4 POINT LOADING)
 B - 1" GLASS (1/8 POINT LOADING)



Laws and building and safety codes governing the design and use of glazed entrance, window, and curtain wall products vary widely. Kawneer does not control the selection of product configurations, operating hardware, or glazing materials, and assumes no responsibility therefor.

Kawneer reserves the right to change configuration without prior notice when deemed necessary for product improvement.
 © Kawneer Company, Inc., 2013

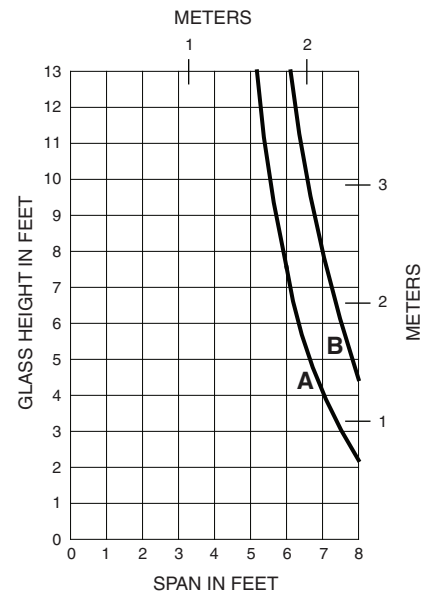
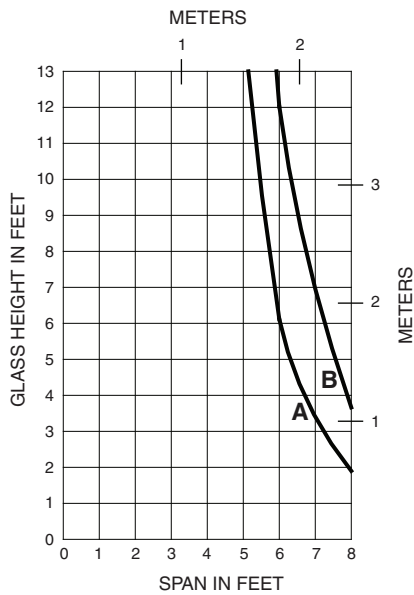
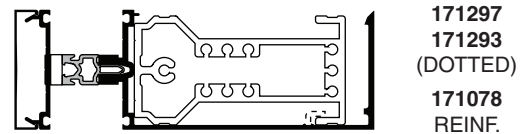
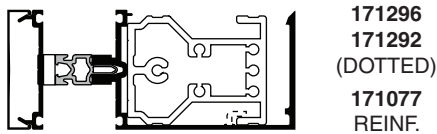
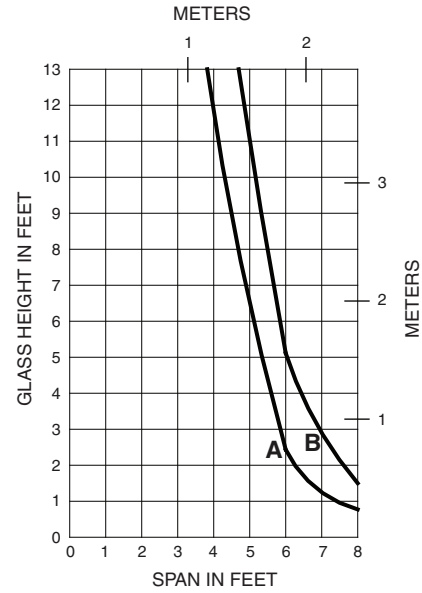
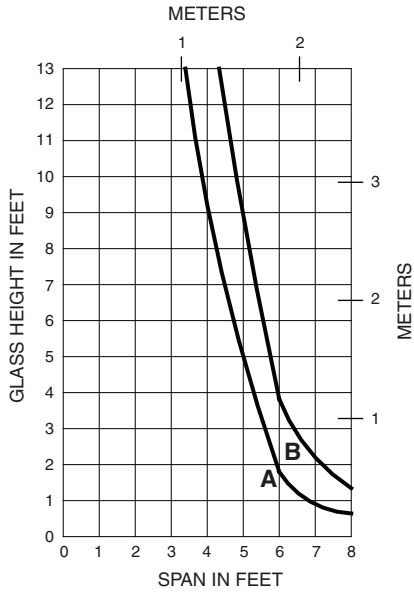
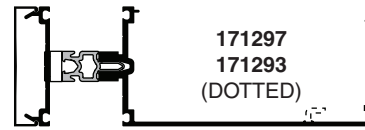
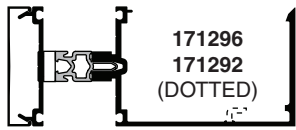
A - 1-3/4" GLASS (1/4 POINT LOADING)
 B - 1-3/4" GLASS (1/8 POINT LOADING)



Laws and building and safety codes governing the design and use of glazed entrance, window, and curtain wall products vary widely. Kawneer does not control the selection of product configurations, operating hardware, or glazing materials, and assumes no responsibility therefor.

Kawneer reserves the right to change configuration without prior notice when deemed necessary for product improvement.
 © Kawneer Company, Inc., 2013

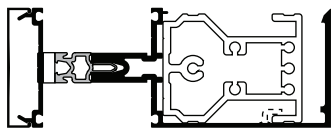
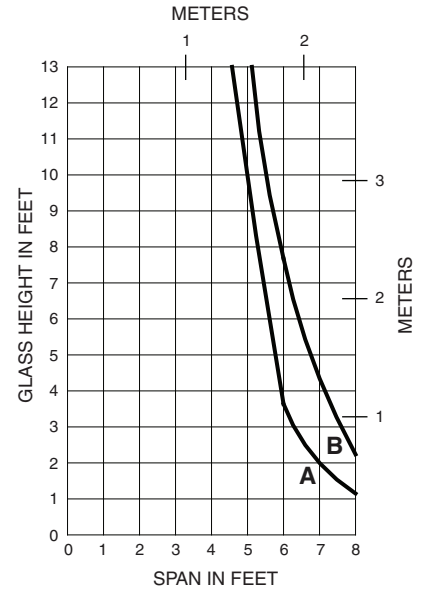
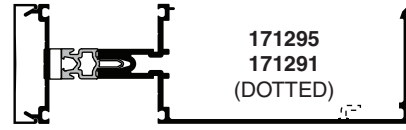
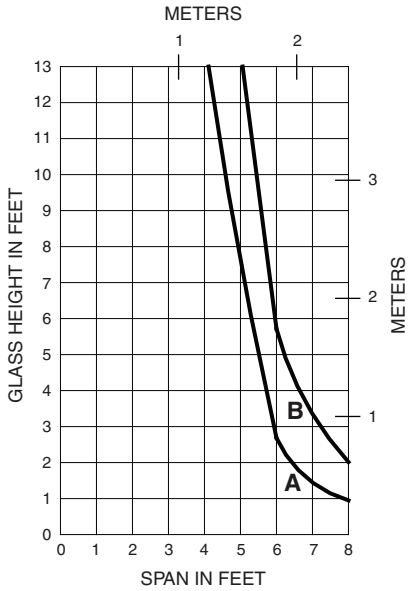
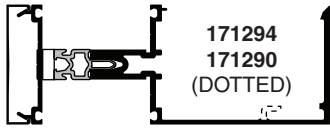
A - 1" GLASS (1/4 POINT LOADING)
 B - 1" GLASS (1/8 POINT LOADING)



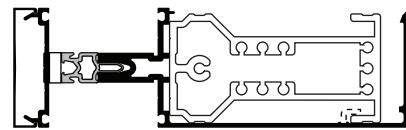
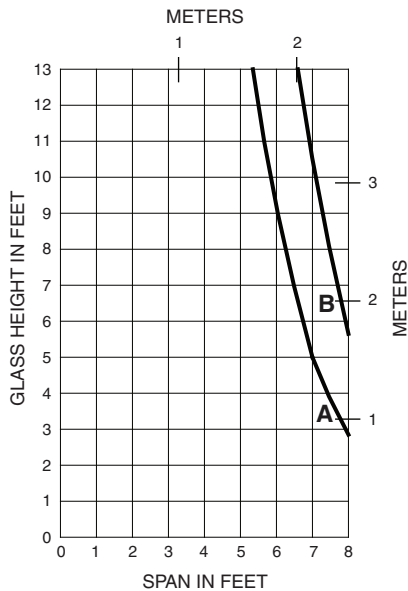
Laws and building and safety codes governing the design and use of glazed entrance, window, and curtain wall products vary widely. Kawneer does not control the selection of product configurations, operating hardware, or glazing materials, and assumes no responsibility therefor.

Kawneer reserves the right to change configuration without prior notice when deemed necessary for product improvement.
 © Kawneer Company, Inc., 2013

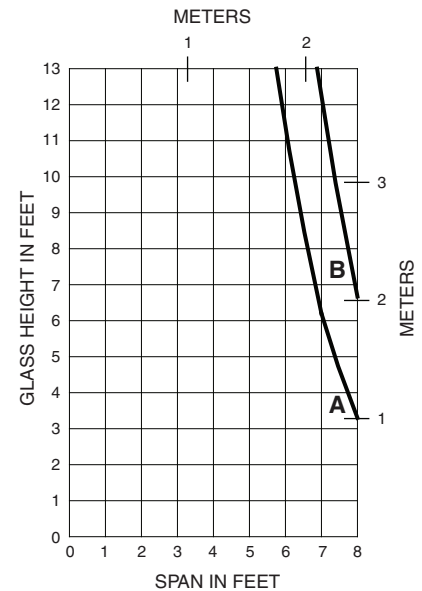
A - 1" GLASS (1/4 POINT LOADING)
 B - 1" GLASS (1/8 POINT LOADING)



171294
 171290
 (DOTTED)
 171077
 REINF.



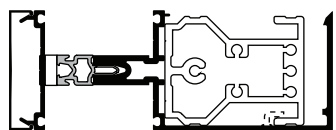
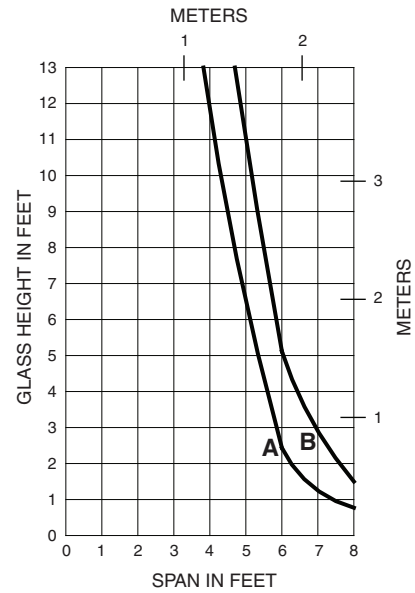
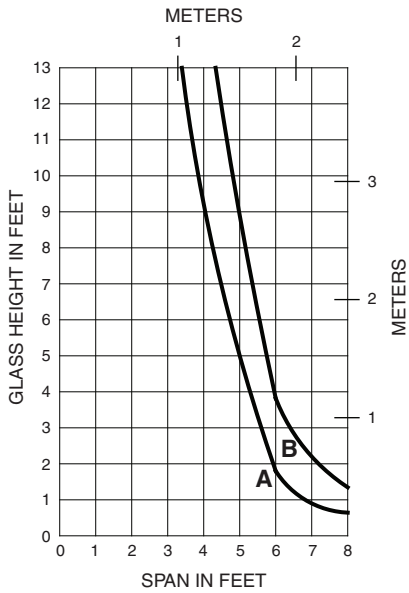
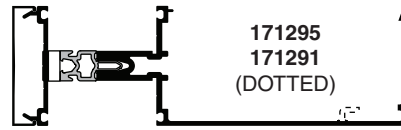
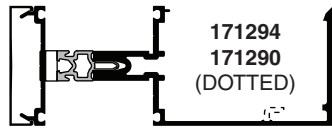
171295
 171291
 (DOTTED)
 171078
 REINF.



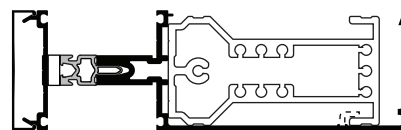
Laws and building and safety codes governing the design and use of glazed entrance, window, and curtain wall products vary widely. Kawneer does not control the selection of product configurations, operating hardware, or glazing materials, and assumes no responsibility therefor.

Kawneer reserves the right to change configuration without prior notice when deemed necessary for product improvement.
 © Kawneer Company, Inc., 2013

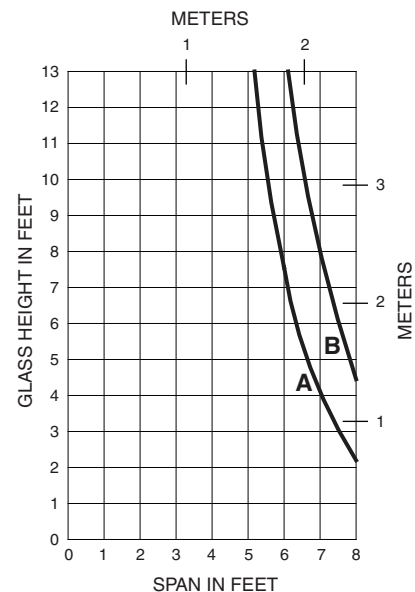
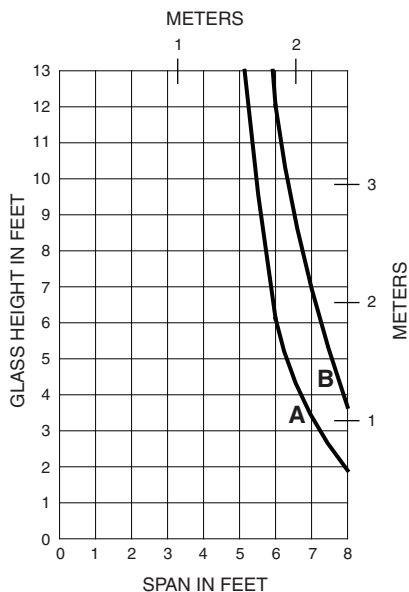
A - 1-3/4" GLASS (1/4 POINT LOADING)
 B - 1-3/4" GLASS (1/8 POINT LOADING)



171294
 171290
 (DOTTED)
 171077
 REINF.



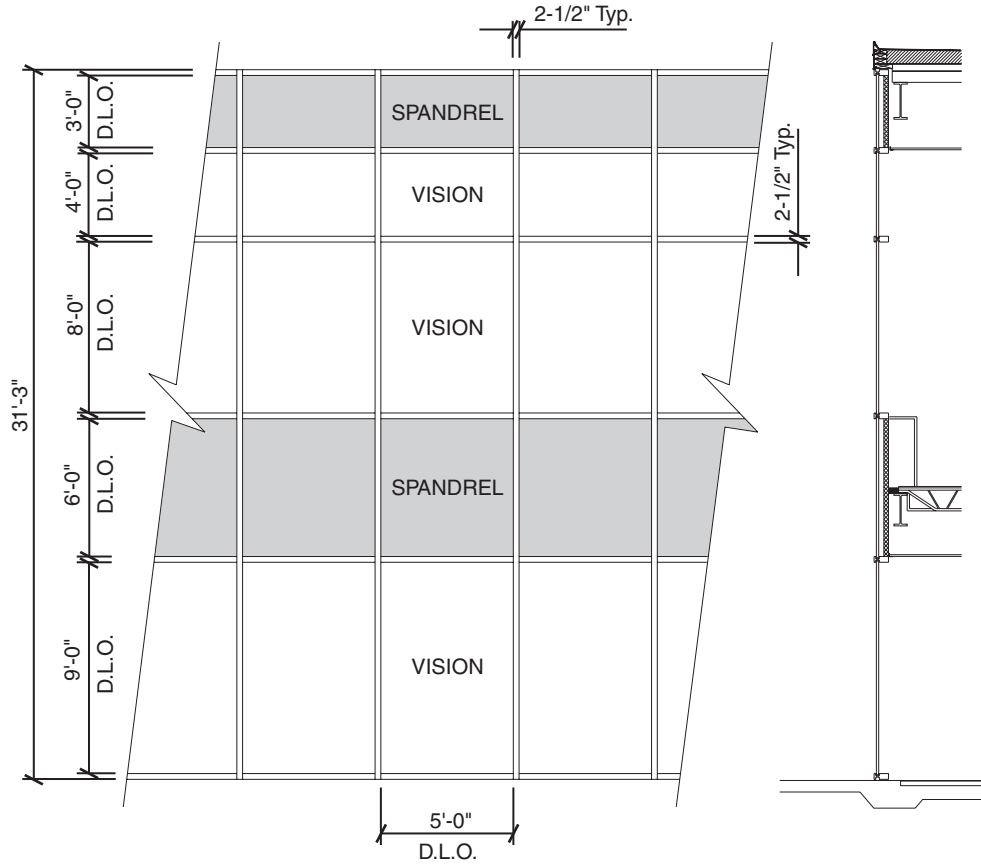
171295
 171291
 (DOTTED)
 171078
 REINF.



Laws and building and safety codes governing the design and use of glazed entrance, window, and curtain wall products vary widely. Kawneer does not control the selection of product configurations, operating hardware, or glazing materials, and assumes no responsibility therefor.

Kawneer reserves the right to change configuration without prior notice when deemed necessary for product improvement.
 © Kawneer Company, Inc., 2013

Generic Project Specific U-factor Example Calculation
(Percent of Glass will vary on specific products depending on sitelines)
 (Based on single bay of Curtain Wall/Window Wall)



Vision Area

Example Glass U-factor	= 0.48 Btu/(ft ² · h · °F)
Vision Area	= 5(9 + 8 + 4) = 105.0 ft ²
Total Area (Vision)	= 5' 2-1/2" (9' 3-3/4" + 8' 2-1/2" + 4' 2-1/2") = 113.2 ft ²
Percentage of Vision Glass	= (Vision Area ÷ Total Area)100 = (105.0 ÷ 113.2)100 = 93%

Spandrel Area

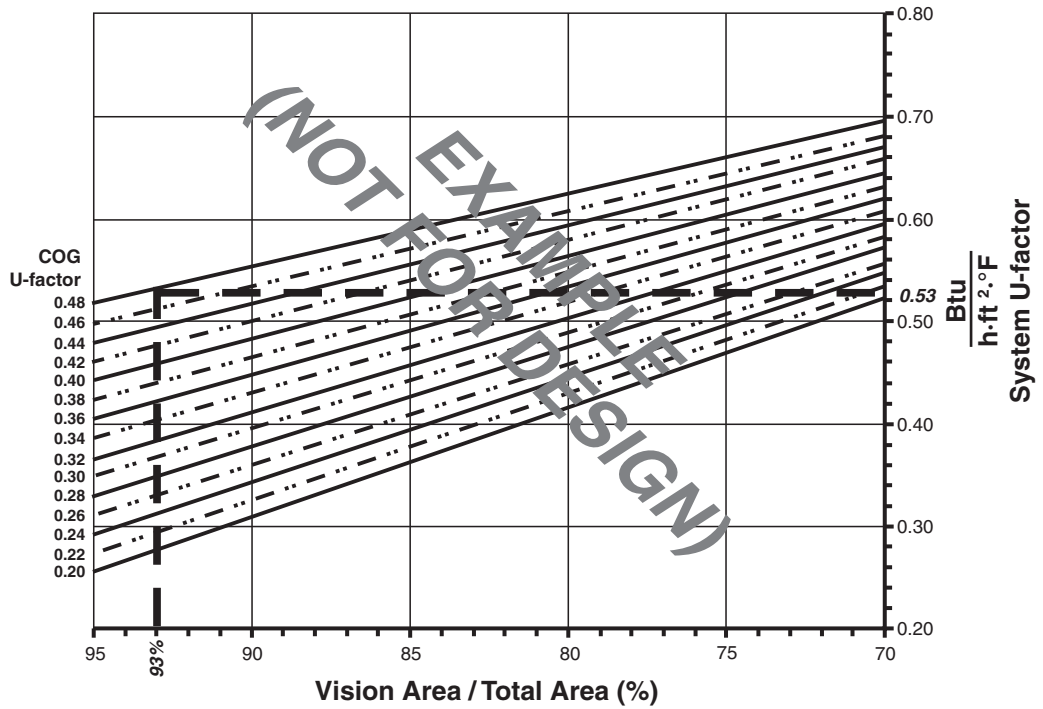
Example Spandrel R-value	= 15 (ft ² · h · °F)/Btu
Spandrel Area	= 5(6 + 3) = 45.0 ft ²
Total Area (Spandrel)	= 5' 2-1/2" (6' 2-1/2" + 3' 3-3/4") = 49.6 ft ²
Percent of Spandrel	= (Spandrel Area ÷ Total Area)100 = (45.0 ÷ 49.6)100 = 91%

Laws and building and safety codes governing the design and use of glazed entrance, window, and curtain wall products vary widely. Kawneer does not control the selection of product configurations, operating hardware, or glazing materials, and assumes no responsibility therefor.

Kawneer reserves the right to change configuration without prior notice when deemed necessary for product improvement.
 © Kawneer Company, Inc., 2013

Vision Area Chart

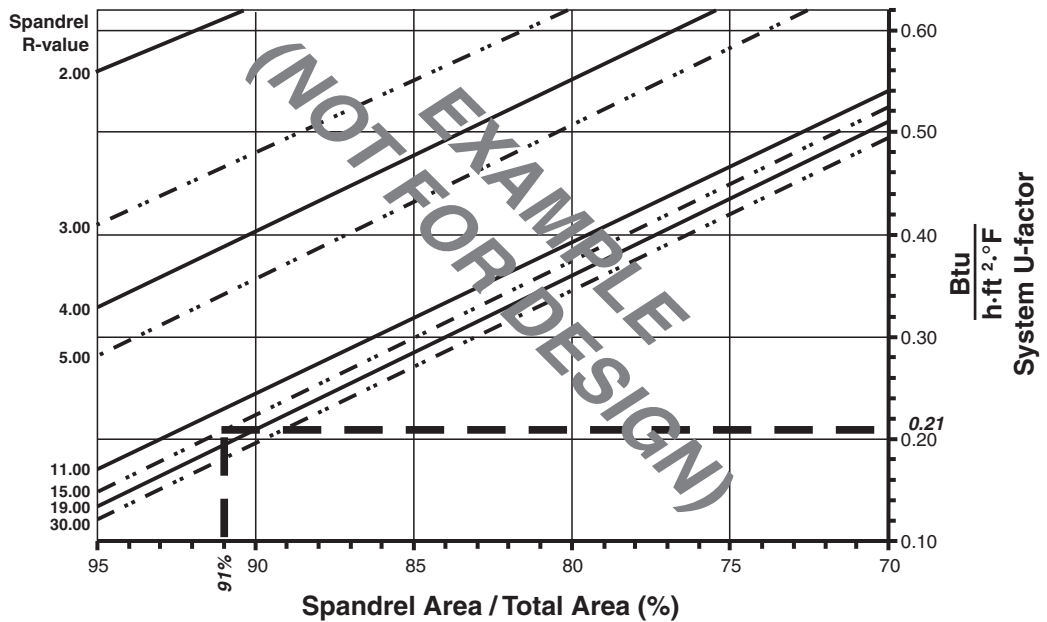
System U-factor vs Percent of Vision Area



Based on a single curtain wall bay of 93% vision glass and center of glass U-factor of 0.48, System U-factor is equal to 0.53 Btu/(h·ft²·°F)

Spandrel Area Chart

System U-factor vs Percent of Spandrel Area



Based on a single curtain wall bay of 91% spandrel and center of spandrel R-value of 15, system U-factor is equal to 0.21 Btu/(h·ft²·°F)

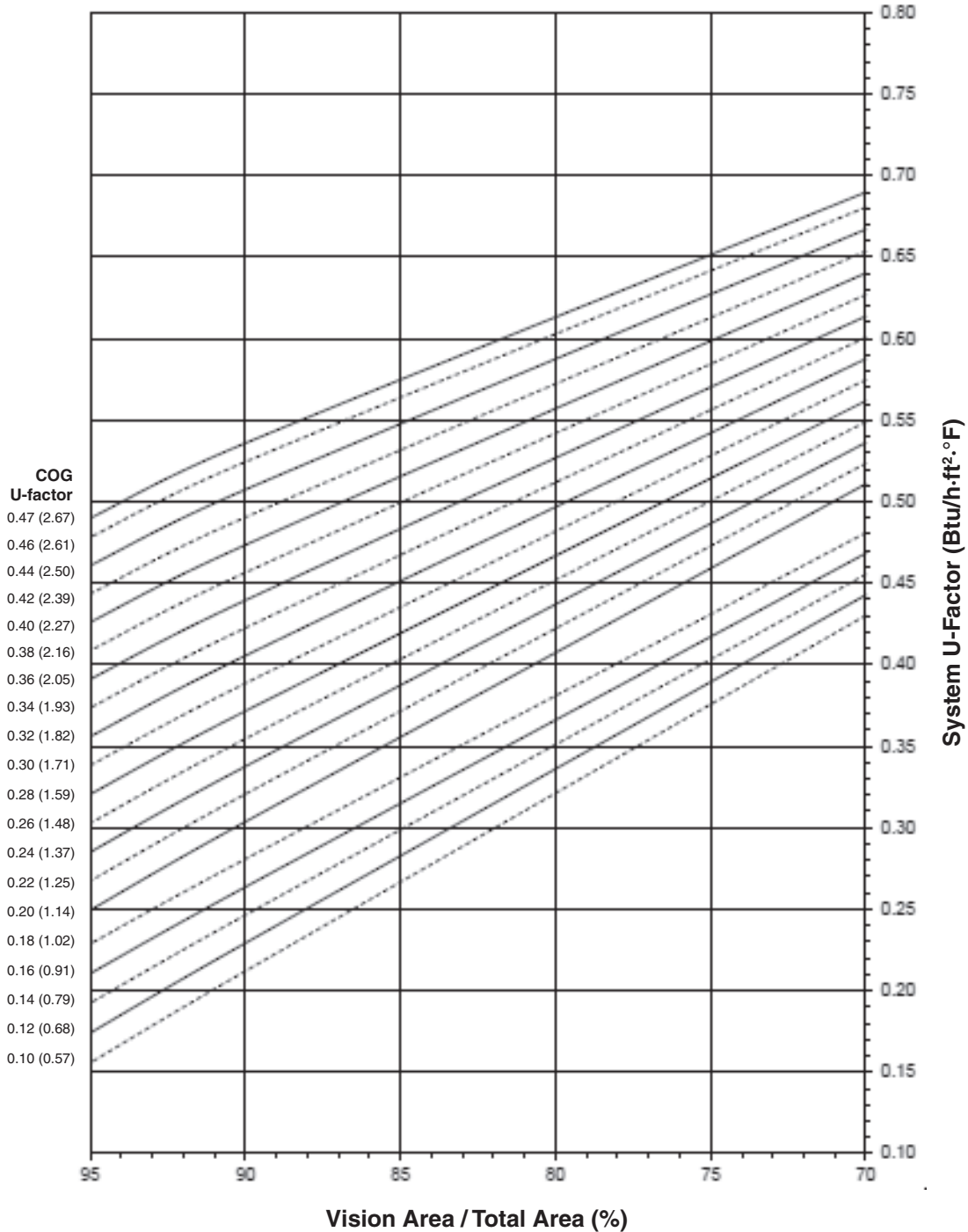
Laws and building and safety codes governing the design and use of glazed entrance, window, and curtain wall products vary widely. Kawneer does not control the selection of product configurations, operating hardware, or glazing materials, and assumes no responsibility therefor.

Kawneer reserves the right to change configuration without prior notice when deemed necessary for product improvement.
© Kawneer Company, Inc., 2013

Note:
Values in parentheses are metric.
COG=Center of Glass.
Charts are generated per AAMA 507.

1" GLAZING WITH ALUMINUM PRESSURE PLATE

System U-Factor for Vision Glass



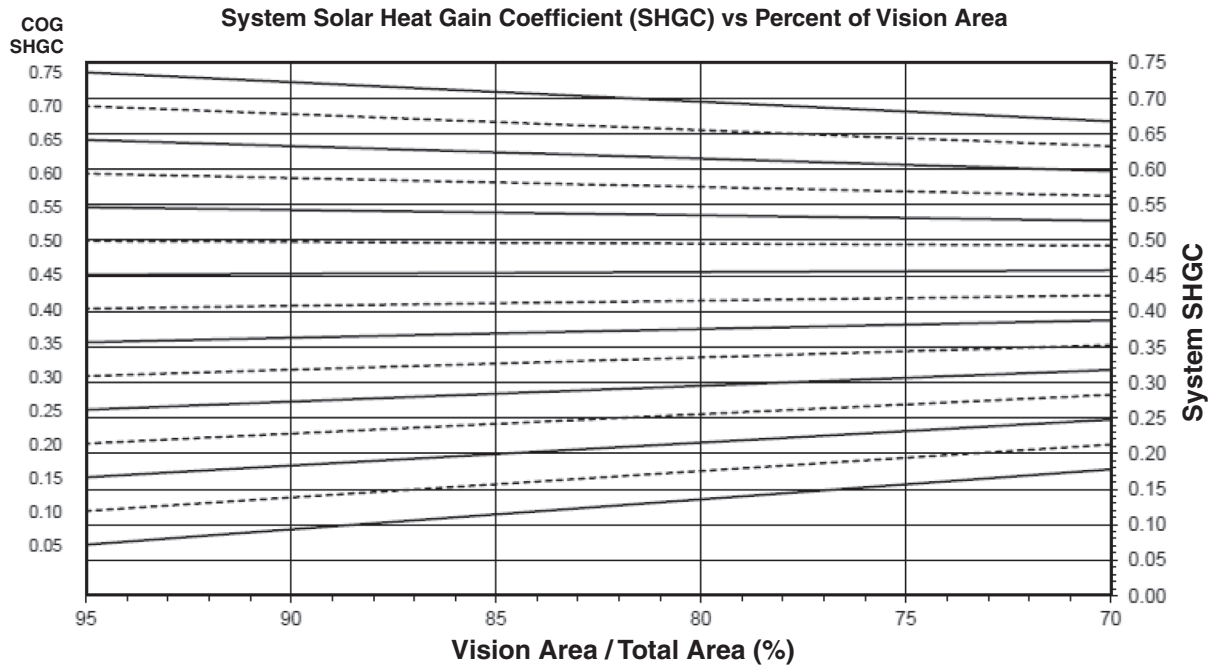
Notes for System U-Factor, SHGC and VT charts:

For glass values that are not listed, linear interpolation is permitted.
Glass properties are based on center of glass values (winter conditions) and are obtained from your glass supplier.

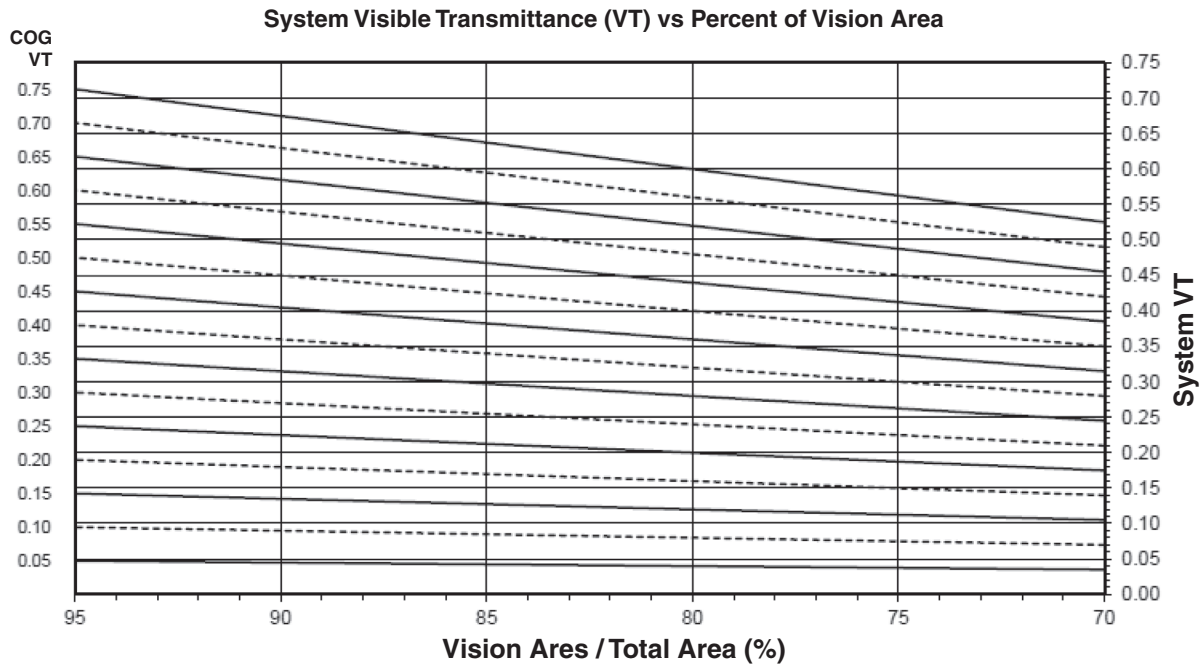
Laws and building and safety codes governing the design and use of glazed entrance, window, and curtain wall products vary widely. Kawneer does not control the selection of product configurations, operating hardware, or glazing materials, and assumes no responsibility therefor.

Kawneer reserves the right to change configuration without prior notice when deemed necessary for product improvement.
© Kawneer Company, Inc., 2013

1" GLAZING WITH ALUMINUM PRESSURE PLATE



Charts are generated per AAMA 507.



Charts are generated per AAMA 507.

Laws and building and safety codes governing the design and use of glazed entrance, window, and curtain wall products vary widely. Kawneer does not control the selection of product configurations, operating hardware, or glazing materials, and assumes no responsibility therefor.

Kawneer reserves the right to change configuration without prior notice when deemed necessary for product improvement.
© Kawneer Company, Inc., 2013

Thermal Transmittance ¹ (BTU/hr • ft² • °F)

Glass U-Factor ³	Overall U-Factor ⁴
0.47	0.53
0.46	0.52
0.44	0.50
0.42	0.49
0.40	0.47
0.38	0.45
0.36	0.44
0.34	0.42
0.32	0.40
0.30	0.39
0.28	0.37
0.26	0.35
0.24	0.33
0.22	0.32
0.20	0.30
0.18	0.28
0.16	0.26
0.14	0.24
0.12	0.23
0.10	0.21

1" GLAZING WITH ALUMINUM PRESSURE PLATE

NOTE: For glass values that are not listed, linear interpolation is permitted.

1. U-Factors are determined in accordance with NFRC 100.
2. SHGC and VT values are determined in accordance with NFRC 200.
3. Glass properties are based on center of glass values and are obtained from your glass supplier.
4. Overall U-Factor, SHGC, and VT Matricies are based on the standard NFRC specimen size of 2000mm wide by 2000mm high (78-3/4" by 78-3/4").

SHGC Matrix ²

Glass SHGC ³	Overall SHGC ⁴
0.75	0.72
0.70	0.68
0.65	0.63
0.60	0.59
0.55	0.54
0.50	0.50
0.45	0.45
0.40	0.41
0.35	0.36
0.30	0.32
0.25	0.27
0.20	0.23
0.15	0.18
0.10	0.14
0.05	0.09

Visible Transmittance ²

Glass VT ³	Overall VT ⁴
0.75	0.68
0.70	0.63
0.65	0.59
0.60	0.54
0.55	0.50
0.50	0.45
0.45	0.41
0.40	0.36
0.35	0.32
0.30	0.27
0.25	0.23
0.20	0.18
0.15	0.14
0.10	0.09
0.05	0.05

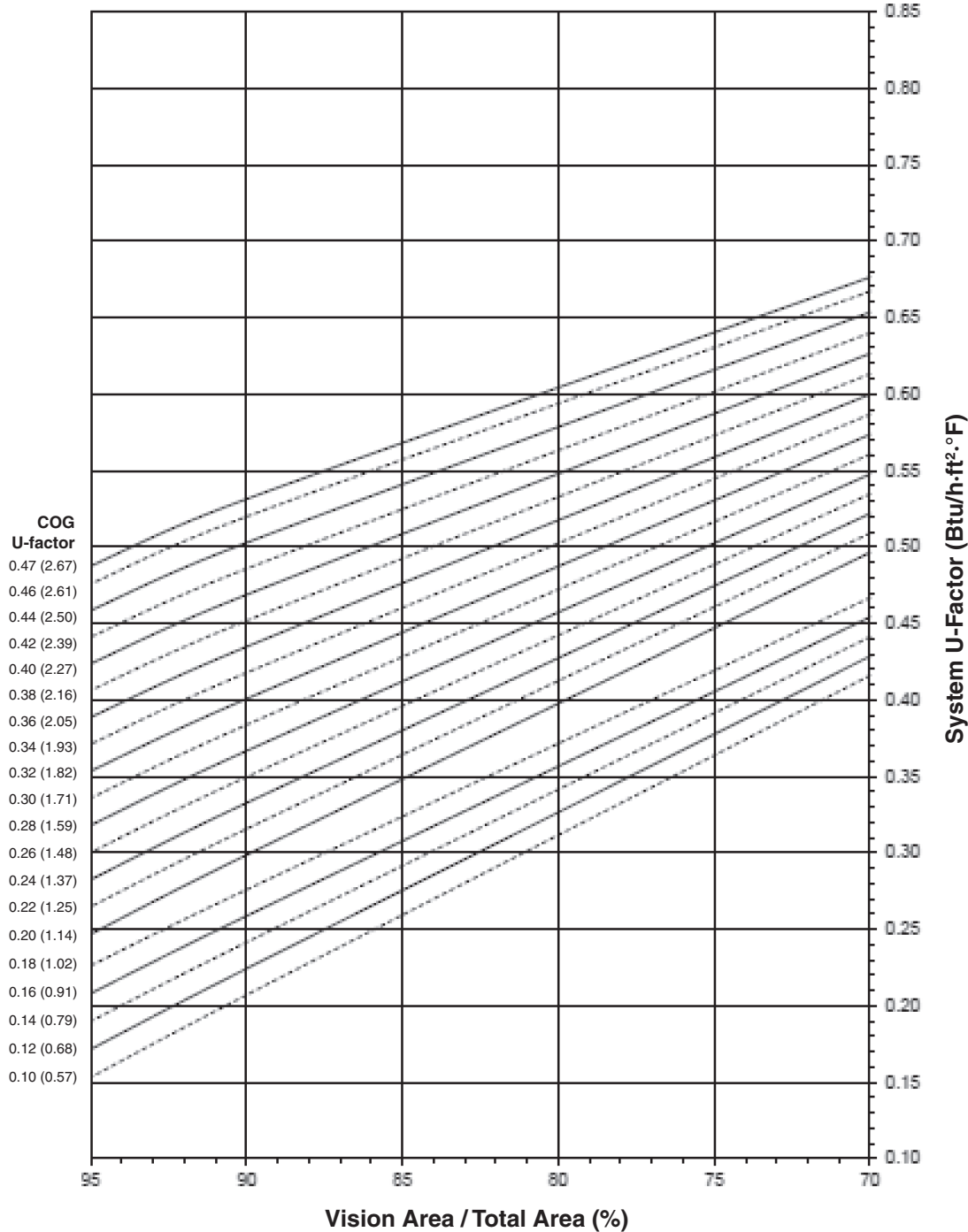
Laws and building and safety codes governing the design and use of glazed entrance, window, and curtain wall products vary widely. Kawneer does not control the selection of product configurations, operating hardware, or glazing materials, and assumes no responsibility therefor.

Kawneer reserves the right to change configuration without prior notice when deemed necessary for product improvement.
© Kawneer Company, Inc., 2013

Note:
 Values in parentheses are metric.
 COG=Center of Glass.
 Charts are generated per AAMA 507.

1" GLAZING WITH FIBERGLASS PRESSURE PLATE

System U-Factor for Vision Glass



Notes for System U-Factor, SHGC and VT charts:

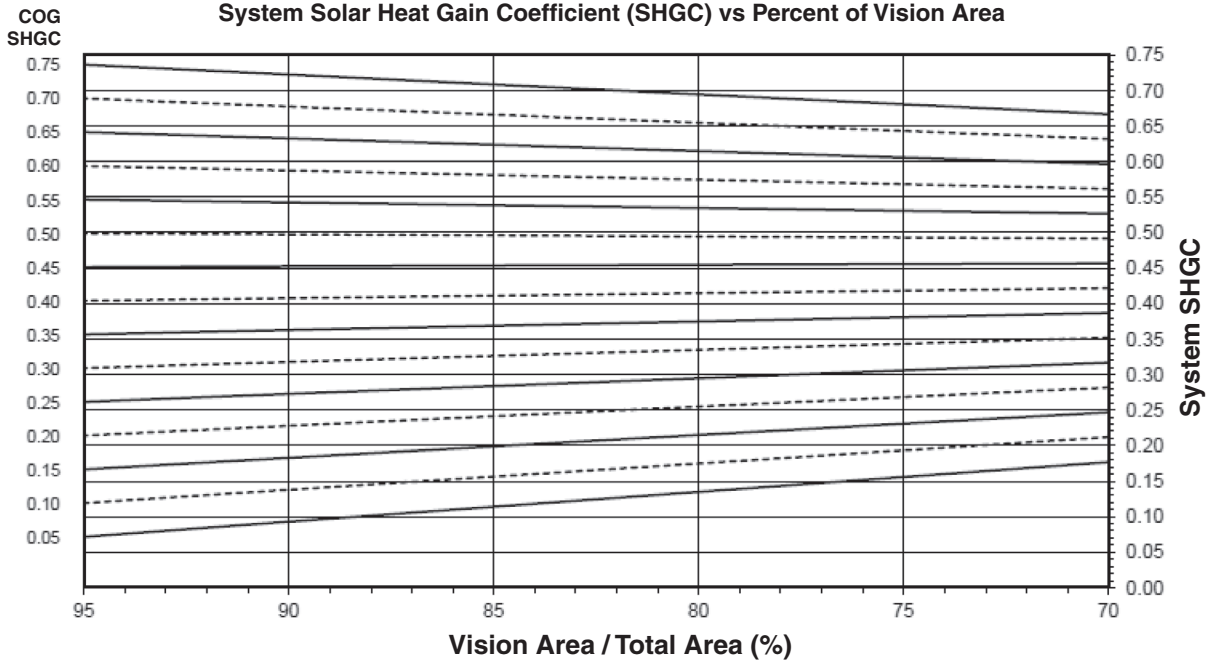
For glass values that are not listed, linear interpolation is permitted.
 Glass properties are based on center of glass values (winter conditions) and are obtained from your glass supplier.

Laws and building and safety codes governing the design and use of glazed entrance, window, and curtain wall products vary widely. Kawneer does not control the selection of product configurations, operating hardware, or glazing materials, and assumes no responsibility therefor.

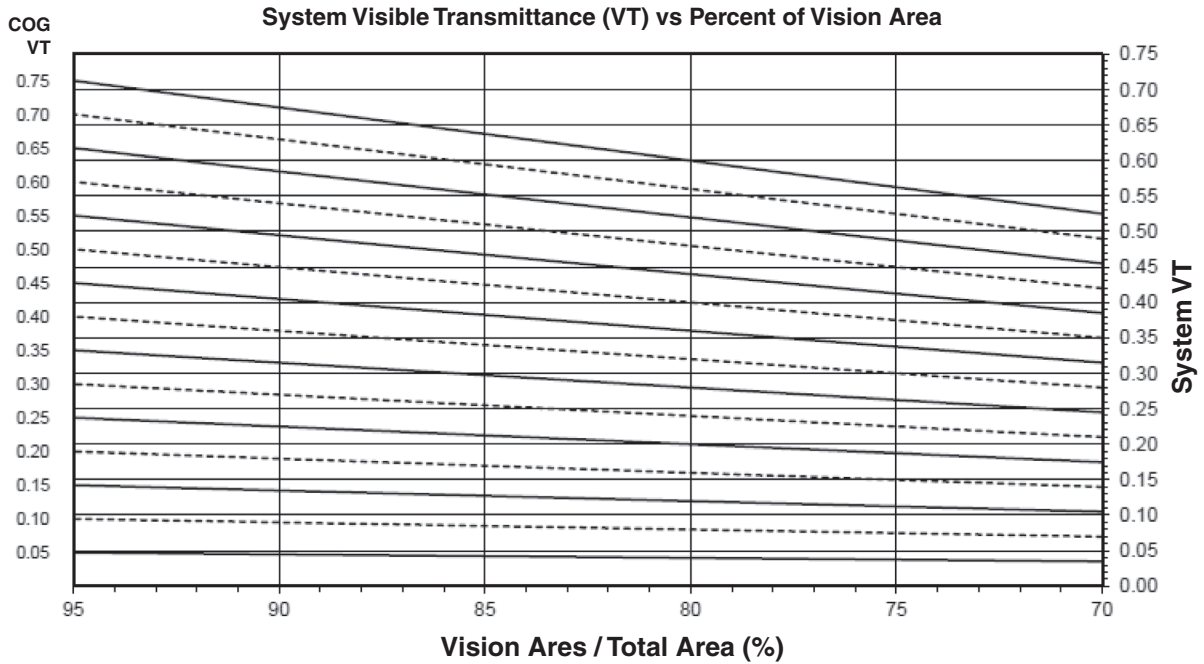
Kawneer reserves the right to change configuration without prior notice when deemed necessary for product improvement.

© Kawneer Company, Inc., 2013

1" GLAZING WITH FIBERGLASS PRESSURE PLATE



Charts are generated per AAMA 507.



Charts are generated per AAMA 507.

Laws and building and safety codes governing the design and use of glazed entrance, window, and curtain wall products vary widely. Kawneer does not control the selection of product configurations, operating hardware, or glazing materials, and assumes no responsibility therefor.

Kawneer reserves the right to change configuration without prior notice when deemed necessary for product improvement.
 © Kawneer Company, Inc., 2013

Thermal Transmittance¹ (BTU/hr • ft² • °F)

Glass U-Factor ³	Overall U-Factor ⁴
0.47	0.53
0.46	0.52
0.44	0.50
0.42	0.48
0.40	0.47
0.38	0.45
0.36	0.43
0.34	0.41
0.32	0.40
0.30	0.38
0.28	0.36
0.26	0.35
0.24	0.33
0.22	0.31
0.20	0.30
0.18	0.27
0.16	0.26
0.14	0.24
0.12	0.22
0.10	0.20

**1" GLAZING WITH
FIBERGLASS PRESSURE PLATE**

NOTE: For glass values that are not listed, linear interpolation is permitted.

1. U-Factors are determined in accordance with NFRC 100.
2. SHGC and VT values are determined in accordance with NFRC 200.
3. Glass properties are based on center of glass values and are obtained from your glass supplier.
4. Overall U-Factor, SHGC, and VT Matricies are based on the standard NFRC specimen size of 2000mm wide by 2000mm high (78-3/4" by 78-3/4").

SHGC Matrix²

Glass SHGC ³	Overall SHGC ⁴
0.75	0.72
0.70	0.68
0.65	0.63
0.60	0.59
0.55	0.54
0.50	0.50
0.45	0.45
0.40	0.41
0.35	0.36
0.30	0.32
0.25	0.27
0.20	0.23
0.15	0.18
0.10	0.14
0.05	0.09

Visible Transmittance²

Glass VT ³	Overall VT ⁴
0.75	0.68
0.70	0.63
0.65	0.59
0.60	0.54
0.55	0.50
0.50	0.45
0.45	0.41
0.40	0.36
0.35	0.32
0.30	0.27
0.25	0.23
0.20	0.18
0.15	0.14
0.10	0.09
0.05	0.05

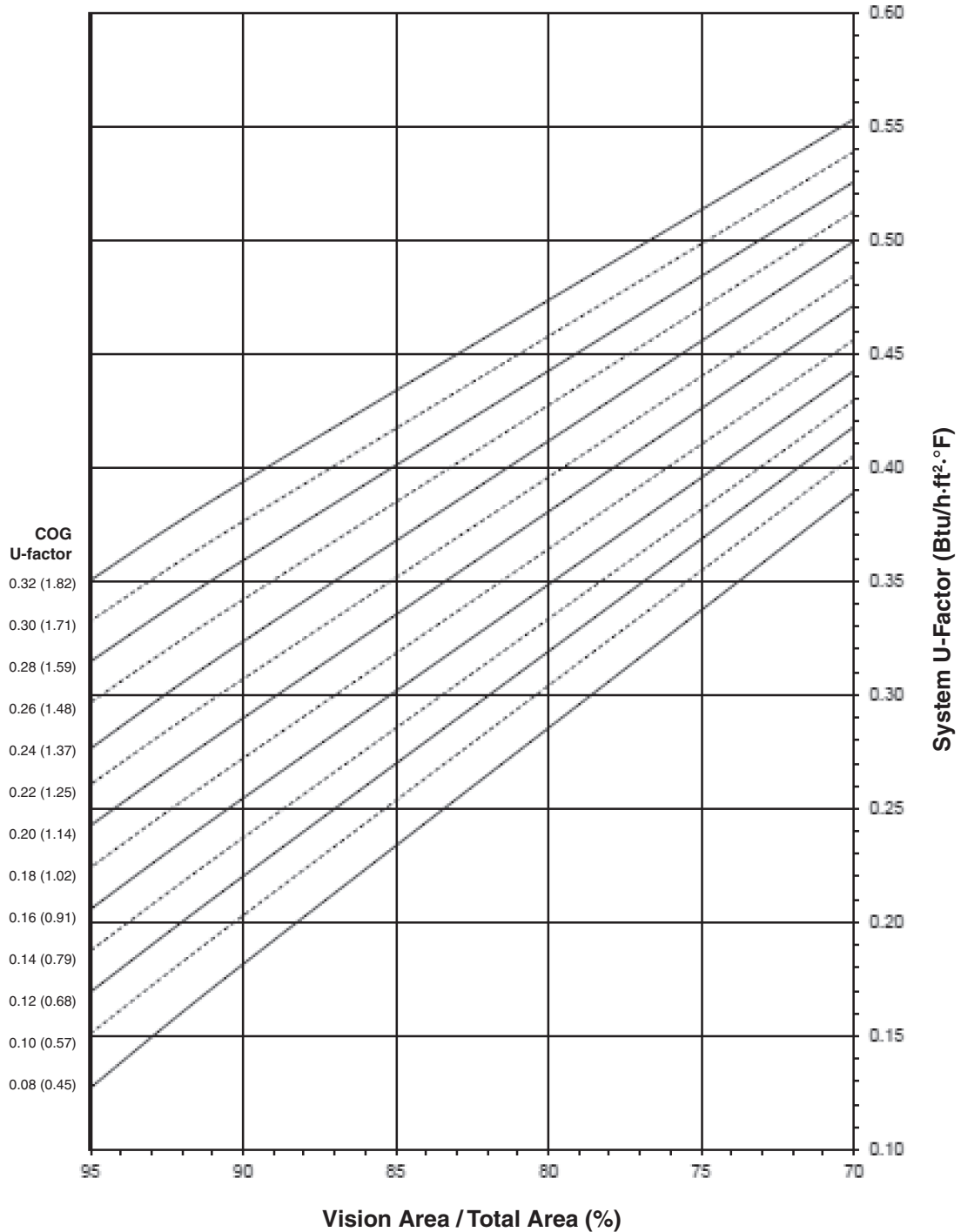
Laws and building and safety codes governing the design and use of glazed entrance, window, and curtain wall products vary widely. Kawneer does not control the selection of product configurations, operating hardware, or glazing materials, and assumes no responsibility therefor.

Kawneer reserves the right to change configuration without prior notice when deemed necessary for product improvement.
© Kawneer Company, Inc., 2013

Note:
 Values in parentheses are metric.
 COG=Center of Glass.
 Charts are generated per AAMA 507.

1-3/4" GLAZING WITH ALUMINUM PRESSURE PLATE

System U-Factor for Vision Glass



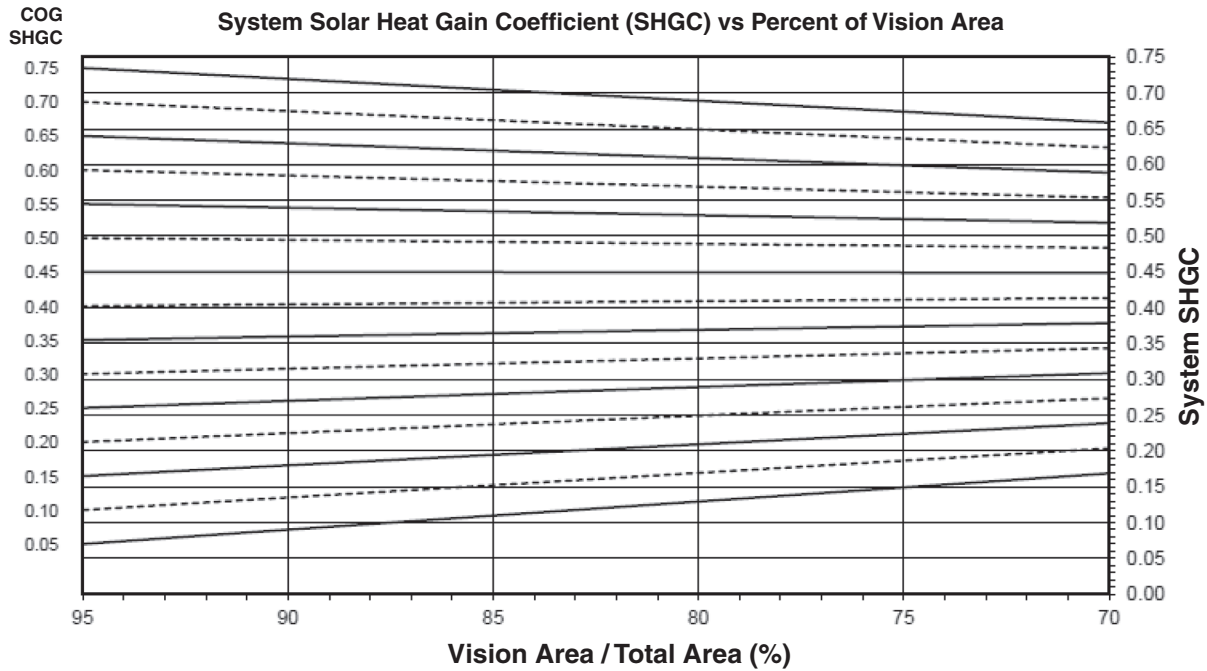
Notes for System U-Factor, SHGC and VT charts:

For glass values that are not listed, linear interpolation is permitted.
 Glass properties are based on center of glass values (winter conditions) and are obtained from your glass supplier.

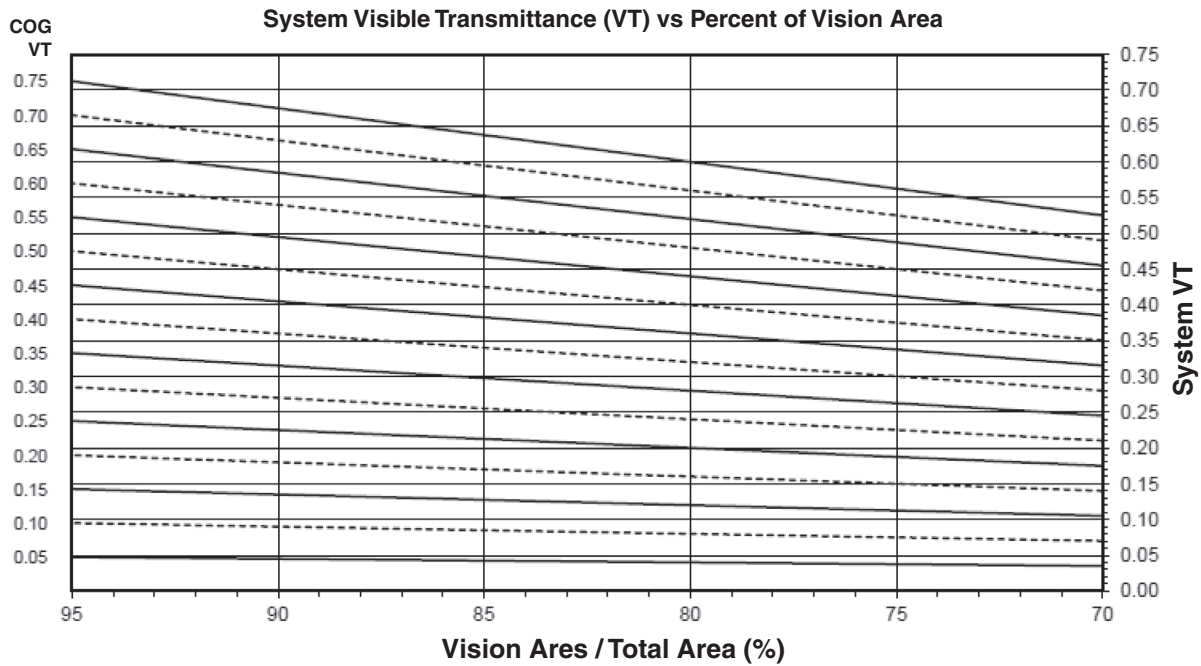
Laws and building and safety codes governing the design and use of glazed entrance, window, and curtain wall products vary widely. Kawneer does not control the selection of product configurations, operating hardware, or glazing materials, and assumes no responsibility therefor.

Kawneer reserves the right to change configuration without prior notice when deemed necessary for product improvement.
 © Kawneer Company, Inc., 2013

1-3/4" GLAZING WITH ALUMINUM PRESSURE PLATE



Charts are generated per AAMA 507.



Charts are generated per AAMA 507.

Laws and building and safety codes governing the design and use of glazed entrance, window, and curtain wall products vary widely. Kawneer does not control the selection of product configurations, operating hardware, or glazing materials, and assumes no responsibility therefor.

Kawneer reserves the right to change configuration without prior notice when deemed necessary for product improvement.
© Kawneer Company, Inc., 2013

Thermal Transmittance ¹ (BTU/hr • ft² • °F)

Glass U-Factor ³	Overall U-Factor ⁴
0.32	0.39
0.30	0.37
0.28	0.36
0.26	0.34
0.24	0.32
0.22	0.30
0.20	0.29
0.18	0.27
0.16	0.25
0.14	0.23
0.12	0.22
0.10	0.20
0.08	0.18

1-3/4" GLAZING WITH ALUMINUM PRESSURE PLATE

NOTE: For glass values that are not listed, linear interpolation is permitted.

1. U-Factors are determined in accordance with NFRC 100.
2. SHGC and VT values are determined in accordance with NFRC 200.
3. Glass properties are based on center of glass values and are obtained from your glass supplier.
4. Overall U-Factor, SHGC, and VT Matricies are based on the standard NFRC specimen size of 2000mm wide by 2000mm high (78-3/4" by 78-3/4").

SHGC Matrix ²

Glass SHGC ³	Overall SHGC ⁴
0.75	0.68
0.70	0.64
0.65	0.59
0.60	0.55
0.55	0.50
0.50	0.46
0.45	0.41
0.40	0.37
0.35	0.32
0.30	0.28
0.25	0.24
0.20	0.19
0.15	0.15
0.10	0.10
0.05	0.06

Visible Transmittance ²

Glass VT ³	Overall VT ⁴
0.75	0.67
0.70	0.63
0.65	0.58
0.60	0.54
0.55	0.49
0.50	0.45
0.45	0.40
0.40	0.36
0.35	0.31
0.30	0.27
0.25	0.22
0.20	0.18
0.15	0.13
0.10	0.09
0.05	0.04

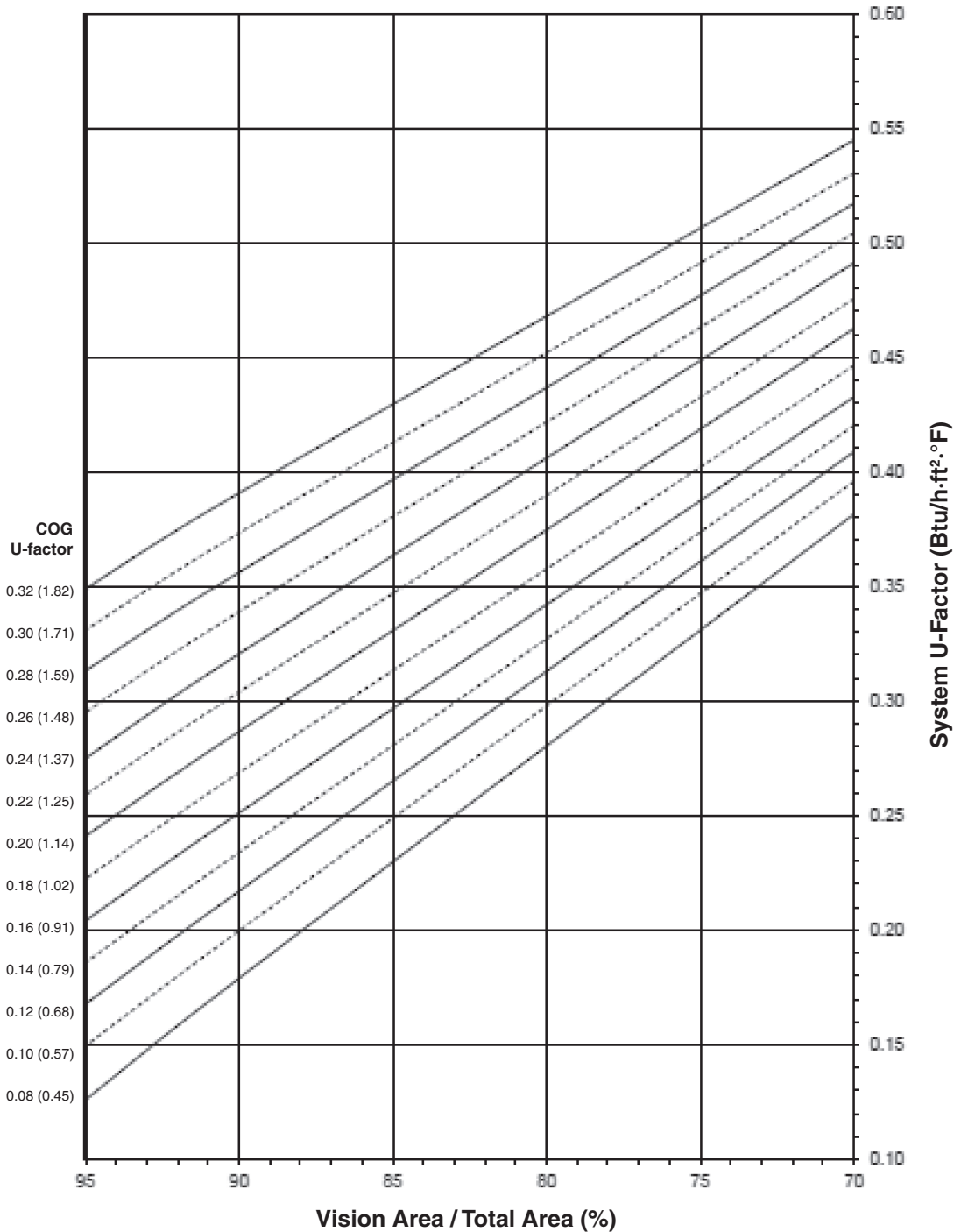
Laws and building and safety codes governing the design and use of glazed entrance, window, and curtain wall products vary widely. Kawneer does not control the selection of product configurations, operating hardware, or glazing materials, and assumes no responsibility therefor.

Kawneer reserves the right to change configuration without prior notice when deemed necessary for product improvement.
© Kawneer Company, Inc., 2013

Note:
 Values in parentheses are metric.
 COG=Center of Glass.
 Charts are generated per AAMA 507.

1-3/4" GLAZING WITH FIBERGLASS PRESSURE PLATE

System U-Factor for Vision Glass



Notes for System U-Factor, SHGC and VT charts:

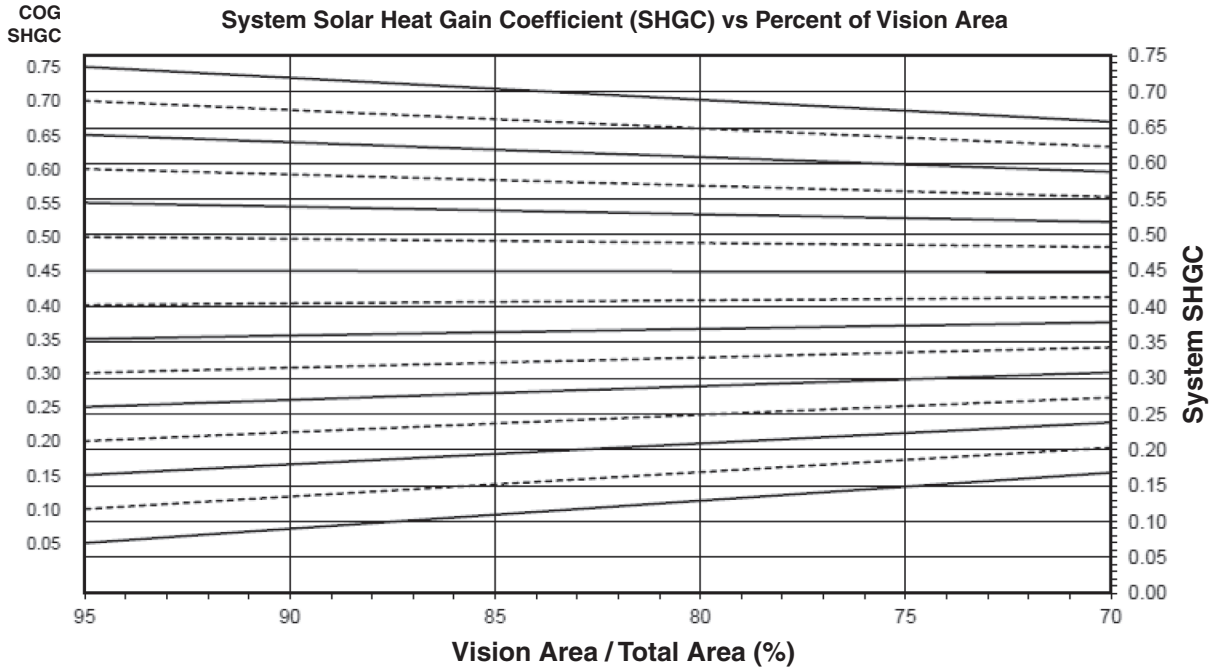
For glass values that are not listed, linear interpolation is permitted.
 Glass properties are based on center of glass values (winter conditions) and are obtained from your glass supplier.

Laws and building and safety codes governing the design and use of glazed entrance, window, and curtain wall products vary widely. Kawneer does not control the selection of product configurations, operating hardware, or glazing materials, and assumes no responsibility therefor.

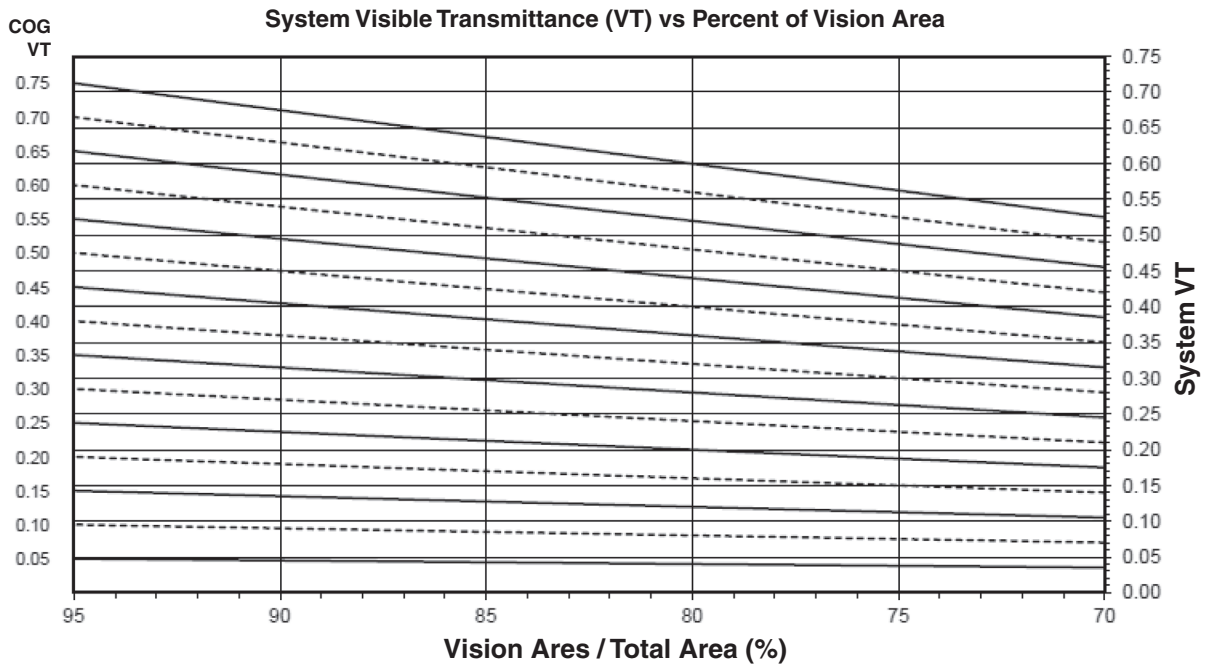
Kawneer reserves the right to change configuration without prior notice when deemed necessary for product improvement.

© Kawneer Company, Inc., 2013

1-3/4" GLAZING WITH FIBERGLASS PRESSURE PLATE



Charts are generated per AAMA 507.



Charts are generated per AAMA 507.

Laws and building and safety codes governing the design and use of glazed entrance, window, and curtain wall products vary widely. Kawneer does not control the selection of product configurations, operating hardware, or glazing materials, and assumes no responsibility therefor.

Kawneer reserves the right to change configuration without prior notice when deemed necessary for product improvement.
© Kawneer Company, Inc., 2013

Thermal Transmittance¹ (BTU/hr • ft² • °F)

Glass U-Factor ³	Overall U-Factor ⁴
0.32	0.39
0.30	0.37
0.28	0.35
0.26	0.34
0.24	0.32
0.22	0.30
0.20	0.28
0.18	0.27
0.16	0.25
0.14	0.23
0.12	0.21
0.10	0.20
0.08	0.18

**1-3/4" GLAZING WITH
FIBERGLASS PRESSURE PLATE**

NOTE: For glass values that are not listed, linear interpolation is permitted.

1. U-Factors are determined in accordance with NFRC 100.
2. SHGC and VT values are determined in accordance with NFRC 200.
3. Glass properties are based on center of glass values and are obtained from your glass supplier.
4. Overall U-Factor, SHGC, and VT Matricies are based on the standard NFRC specimen size of 2000mm wide by 2000mm high (78-3/4" by 78-3/4").

SHGC Matrix²

Glass SHGC ³	Overall SHGC ⁴
0.75	0.68
0.70	0.64
0.65	0.59
0.60	0.55
0.55	0.50
0.50	0.46
0.45	0.41
0.40	0.37
0.35	0.32
0.30	0.28
0.25	0.24
0.20	0.19
0.15	0.15
0.10	0.10
0.05	0.06

Visible Transmittance²

Glass VT ³	Overall VT ⁴
0.75	0.67
0.70	0.63
0.65	0.58
0.60	0.54
0.55	0.49
0.50	0.45
0.45	0.40
0.40	0.36
0.35	0.31
0.30	0.27
0.25	0.22
0.20	0.18
0.15	0.13
0.10	0.09
0.05	0.04

Laws and building and safety codes governing the design and use of glazed entrance, window, and curtain wall products vary widely. Kawneer does not control the selection of product configurations, operating hardware, or glazing materials, and assumes no responsibility therefor.

Kawneer reserves the right to change configuration without prior notice when deemed necessary for product improvement.
© Kawneer Company, Inc., 2013